

# Public transport information for participating teams in ESBA Albufeira Open 2023

## From Topázio Vibe Beach Hotel & Apartments

To: Opening Ceremony .....	1
To: Pavilhão da Escola Básica 2-3 ciclos Dr. Francisco Cabrita (“Cabrita”) .....	2
To: Pavilhão da Escola Básica Prof.ª Diamantina Negrão (“Negrão”) .....	3
To: Pavilhão da Escola Básica Secundária de Albufeira (“Básica”).....	4
To: Pavilhão da Escola Secundária de Albufeira (“Secundária”).....	5
To: Pavilhão Desportivo da Guia (“Guia”) .....	6
To: Pavilhão Desportivo de Olhos de Água (“Aqua”).....	7
To: Pavilhão Municipal de Albufeira (“Municipal 1” and “Municipal 2”) .....	8
To: Pavilhão Municipal Francisco Neves (“Imortal”) .....	9
To: Social Party .....	10

**How to get from your hotel to the different events venues (recommended route):**

**Albufeira Open 2023 matches**

**FROM**

Topázio Vibe Beach Hotel & Apartments  
Rua Vasco da Gama, 8200-294 Albufeira

**To: Opening Ceremony**

Praça da Praia dos Pescadores, 8200-001 Albufeira

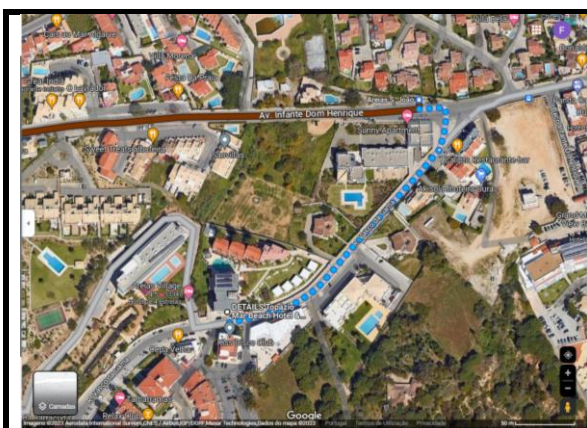
**Bus route 4**

1-From the Topázio Hotel walk 290m to Areias São João bus stop\* – map 1

2-Catch bus route 4 to Câmara Municipal bus stop (+-7 minutes)

3-From bus stop walk +-550m to Praça da Praia dos Pescadores – map 2

\*take note the correct side of the road of the bus stop! Do not go in the wrong direction!



**Map 1 – walk from Topázio Hotel to Areias S. João bus stop**



**Map 2 – walk from Câmara Municipal bus stop to Praça da Praia dos Pescadores**

**To: Pavilhão da Escola Básica 2-3 ciclos Dr. Francisco Cabrita (“Cabrita”)**

Rua da Correia 3, 8200-317 Albufeira

**Bus route 2**

1-From the Topázio Hotel walk 350m to Areias S. João bus stop\* – map 1

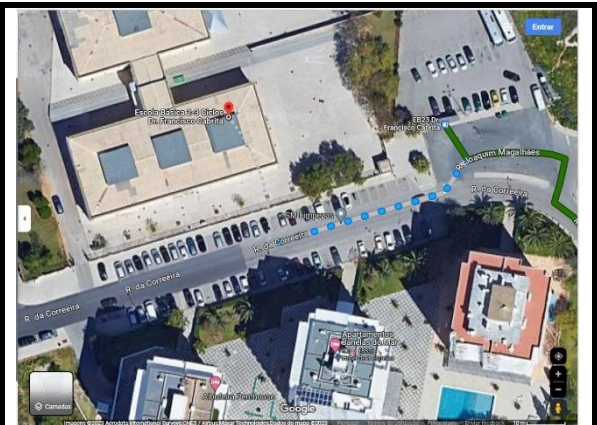
2-Catch bus route 2 to EB23 Dr. Francisco Cabrita bus stop (+-12 minutes)

3-The Cabrita pavilion is next to the EB23 Dr. Francisco Cabrita bus stop.

\*take note the correct side of the road of the bus stop! Do not go in the wrong direction!



**Map 1 – walk from Topázio Hotel to Areias S. João bus stop**



**Map 2 – walk from EB23 Dr. Francisco Cabrita bus stop to Cabrita pavilion**

**To: Pavilhão da Escola Básica Prof.<sup>a</sup> Diamantina Negrão (“Negrão”)**

Rua Prof.<sup>a</sup> Diamantina Barreto Negrão 56, 8200-291 Albufeira

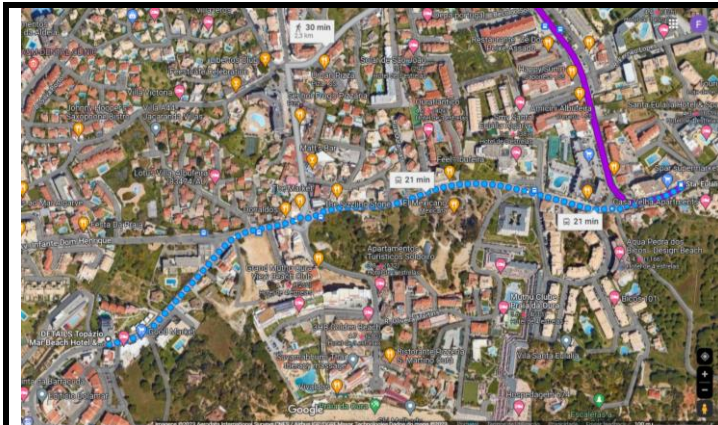
**Bus route 6**

1-From the Topázio Hotel walk 1000m to St.<sup>a</sup> Eulália bus stop\* – map 1

2-Catch bus route 6 to EB23 Prof.<sup>a</sup> Diamantina Negrão bus stop (+8 minutes)

3-The Negrão pavilion is across the road from the bus stop – map 2

\*take note the correct side of the road of the bus stop! Do not go in the wrong direction!



**Map 1 – walk from Topázio Hotel to St.<sup>a</sup> Eulália bus stop**



**Map 2 – walk from EB23 Prof.<sup>a</sup> Diamantina Negrão bus stop to Negrão pavilion**



**To: Pavilhão da Escola Básica Secundária de Albufeira (“Básica”)**

Vale Pedras, 8200-047 Albufeira

**Bus route 4**

1-From the Topázio Hotel walk 350m to Areias S. João bus stop\* – map 1

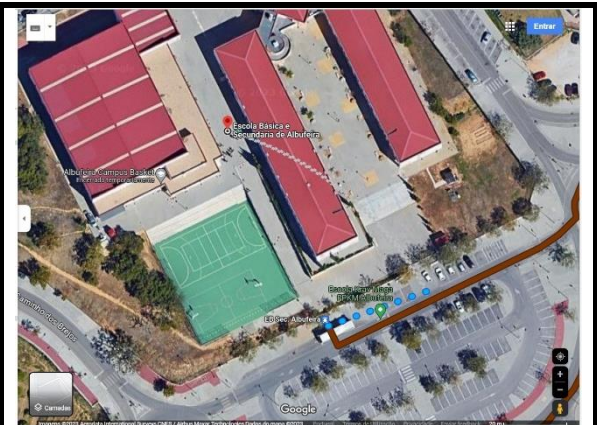
2-Catch bus route 4 to EB Sec. Albufeira bus stop (+-20 minutes)

3-The Básica pavilion is right in front of the bus stop – map 2

\*take note the correct side of the road of the bus stop! Do not go in the wrong direction!



**Map 1 – walk from Topázio Hotel to Areias S. João bus stop**



**Map 2 – walk from EB Sec. Albufeira bus stop to Básica pavilion**

**To: Pavilhão da Escola Secundária de Albufeira (“Secundária”)**

Rua das Escolas, 8200-126 Albufeira

**Bus route 4**

1-From the Topázio Hotel walk 290m to Areias São João bus stop\* – map 1

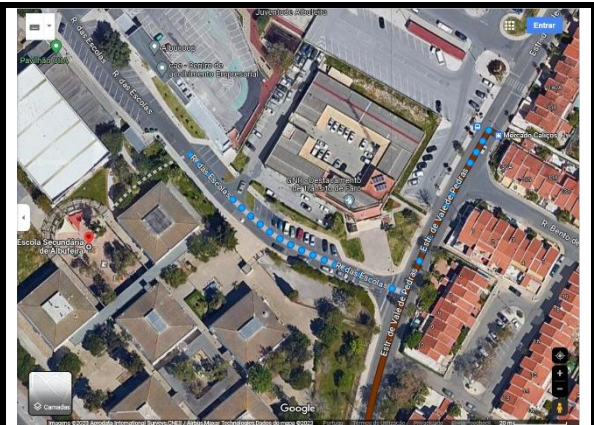
2-Catch bus route 4 to Mercado Caliços (+-9 minutes)

3-From Mercado Caliços walk 170m until Secundária pavilion – map 2

\*take note the correct side of the road of the bus stop! Do not go in the wrong direction!



**Map 1 – walk from Topázio Hotel to Areias S. João bus stop**



**Map 2 – walk from Mercado Caliços bus stop to Secundária pavilion**

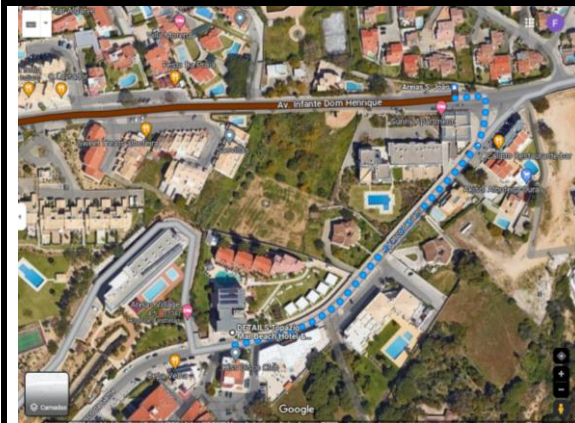
**To: Pavilhão Desportivo da Guia (“Guia”)**

Rua José Cabrita Santos, 8200 Guia

**Bus routes 4 and 7**

- 1-From the Topázio Hotel walk 290m to Areias São João bus stop\* – map 1
- 2-Catch bus route 4 to Terminal Rodoviário bus stop (+-11 minutes)
- 3-From Terminal Rodoviário catch bus route 7 to EB Guia bus stop (+-20 minutes)
- 4-The Guia pavilion is in front of the bus stop – map 2

\*take note the correct side of the road of the bus stop! Do not go in the wrong direction!



**Map 1 – walk from Topázio Hotel to Areias São João bus stop**



**Map 2 – EB Guia bus stop in front of Guia pavilion**



## To: Pavilhão Desportivo de Olhos de Água (“Aqua”)

Urbanização Pinhal do Concelho 54, 8200 Albufeira

### Bus routes 2 and 6

1-From the Topázio Hotel walk 350m to Areias de São João bus stop\* – map 1

2-Catch bus route 2 to Santa Eulália/Posto de Turismo (3 minutes)

3-Cross the road to catch bus route 6 to Ald. Açoiteias bus stop (+-13 minutes) – map 2

4-Walk from bus stop to Aqua pavilion (+- 400m) – map 3

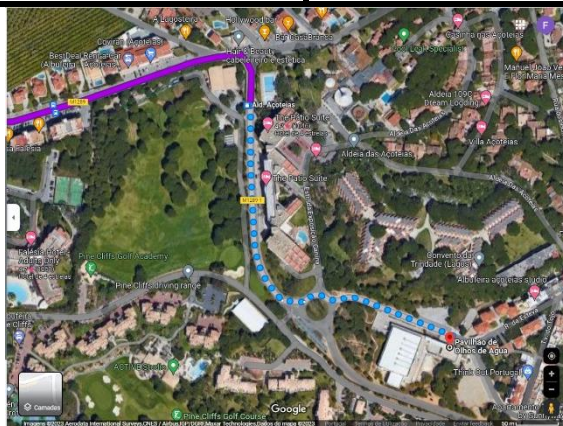
\*take note the correct side of the road of the bus stop! Do not go in the wrong direction!



**Map 1 – walk from Topázio Hotel to Areias São João bus stop**



**Map 2 – cross the road at Santa Eulália/Posto de Turismo bus stop to other bus stop**



**Map 3 – walk from Ald. Açoiteias bus stop to Aqua pavilion**



To: Pavilhão Municipal de Albufeira (“Municipal 1” and “Municipal 2”)

Av.ª das Ilhas B, 8200-047 Albufeira

Bus route 2

1-From the Topázio Hotel walk 350m to Areias São João bus stop\* – map 1

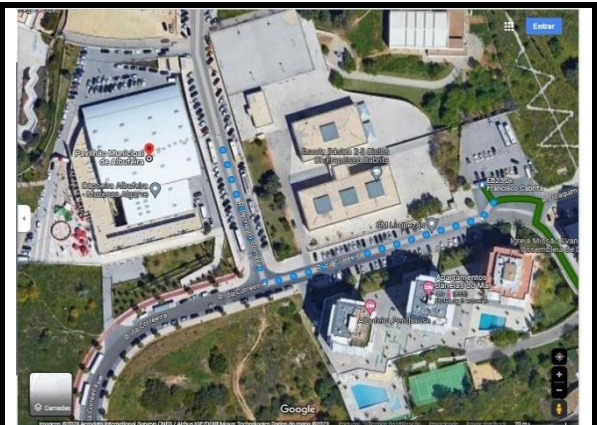
2-Catch bus route 2 to EB23 Dr. Francisco Cabrita bus stop (+-12 minutes)

3-Walk 220m from EB23 Dr. Francisco Cabrita bus stop to Municipal 1 and 2 pavilion – map 2

\*take note the correct side of the road of the bus stop! Do not go in the wrong direction!



**Map 1 – walk from Topázio Hotel to Areias São João bus stop**



**Map 2 – walk from EB23 Dr. Francisco Cabrita bus stop to Municipal 1 and 2 pavilion**

**To: Pavilhão Municipal Francisco Neves (“Imortal”)**

Av.ª do Ténis, 8200-011 Albufeira

**Bus route 2**

1-From the Topázio Hotel walk 350m to Areias São João bus stop\* – map 1

2-Catch bus route 2 to EB23 D. Martim Fernandes bus stop (+-27 minutes)

3-From the bus stop walk 250m to the Imortal pavilion – map 2

\*take note the correct side of the road of the bus stop! Do not go in the wrong direction!



**Map 1 – walk from Topázio Hotel to Areias São João bus stop**



**Map 2 – walk from EB23 D. Martim Fernandes bus stop to Imortal pavilion**

**To: Social Party**

Hotel Paraíso Albufeira, Hotel Paraíso, R. do Município, 8200-161 Albufeira

**Bus route 2**

1-From the Topázio Hotel walk 350m to Areias São João bus stop\* – map 1

2-Catch bus route 2 to Rotunda Minhocas bus stop (+-9 minutes)

3-From the bus stop walk 600m to the Hotel Paraíso – map 2

\*take note the correct side of the road of the bus stop! Do not go in the wrong direction!



**Map 1 – walk from Topázio Hotel to Areias São João bus stop**



**Map 2 – walk from Rotunda Minhocas to Hotel Paraíso**