

Public transport information for participating teams in ESBA Albufeira Open 2023

From Rocamar

To: Opening Ceremony.....	1
To: Pavilhão da Escola Básica 2-3 ciclos Dr. Francisco Cabrita (“Cabrita”).....	2
To: Pavilhão da Escola Básica Prof. ^a Diamantina Negrão (“Negrão”).....	3
To: Pavilhão da Escola Básica Secundária de Albufeira (“Básica”).....	4
To: Pavilhão da Escola Secundária de Albufeira (“Secundária”).....	5
To: Pavilhão Desportivo da Guia (“Guia”).....	6
To: Pavilhão Desportivo de Olhos de Água (“Aqua”).....	7
To: Pavilhão Municipal de Albufeira (“Municipal 1” and “Municipal 2”).....	8
To: Pavilhão Municipal Francisco Neves (“Imortal”).....	9
To: Social Party.....	10

How to get from your hotel to the different events venues (recommend route):

Albufeira Open 2023 matches

FROM

Rocamar

Rua do Estádio 18, 8200-127 Albufeira

To: **Opening Ceremony**

Praça da Praia dos Pescadores, 8200-001 Albufeira

Walking

1-From the Rocamar walk 800m to Praça da Praia dos Pescadores – map 1



To: Pavilhão da Escola Básica 2-3 ciclos Dr. Francisco Cabrita (“Cabrita”)

Rua da Correia 3, 8200-317 Albufeira

Bus routes 7 and 6

1-From the Rocamar Hotel walk 120m to Beato Vicente/Centro Amigo bus stop* – map 1

2-Catch bus route 7 to Av.ª Descobrimentos/Bombeiros (+-4 minutes)

3-Catch bus route 6 to EB23 Dr. Francisco Cabrita bus stop (+-5 minutes)

3-The Cabrita pavilion is next to the EB23 Dr. Francisco Cabrita bus stop – map 2

*take note the correct side of the road of the bus stop! Do not go in the wrong direction!



Map 1 – walk from Rocamar to Beato Vicente/Centro Amigo bus stop



Map 2 – walk from EB23 Dr. Francisco Cabrita bus stop to Cabrita pavilion

To: Pavilhão da Escola Básica Prof.ª Diamantina Negrão (“Negrão”)

Rua Prof.ª Diamantina Barreto Negrão 56, 8200-291 Albufeira

Bus routes 2 and 1

1-From the Rocamar walk 120m to Beato Vicente/Centro Amigo bus stop* – map 1

2-Catch bus route 2 to Terminal Rodoviário bus stop (+7 minutes)

3-Catch bus route 1 to EB23 Prof.ª Diamantina Negrão bus stop (+13 minutes)

3-The Negrão pavilion is in front of the bus stop – map 2

*take note the correct side of the road of the bus stop! Do not go in the wrong direction!



**Map 1 – walk from Rocamar to Beato Vicente/
Centro Amigo bus stop**



**Map 2 – walk from EB23 Prof.ª Diamantina
Negrão bus stop to Negrão pavilion**

To: Pavilhão da Escola Básica Secundária de Albufeira (“Básica”)

Vale Pedras, 8200-047 Albufeira

Bus routes 2 and 1

1-From the Rocamar walk 120m to Beato Vicente/Centro Amigo bus stop* – map 1

2-Catch bus route 2 to Terminal Rodoviário bus stop (+7 minutes)

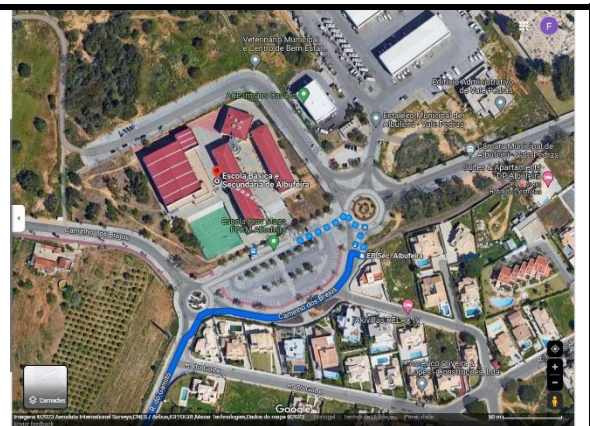
3-Catch bus route 1 to EB Sec. Albufeira bus stop (+3 minutes)

4-The Básica pavilion is across the road from the bus stop – map 2

*take note the correct side of the road of the bus stop! Do not go in the wrong direction!



**Map 1 – walk from Rocamar to Beato Vicente/
Centro Amigo bus stop**



**Map 2 – walk from EB Sec. Albufeira bus stop
to Básica pavilion**

To: Pavilhão da Escola Secundária de Albufeira (“Secundária”)

Rua das Escolas, 8200-126 Albufeira

Bus route 7

1-From the Rocamar walk 120m to Beato Vicente/Centro Amigo bus stop* – map 1

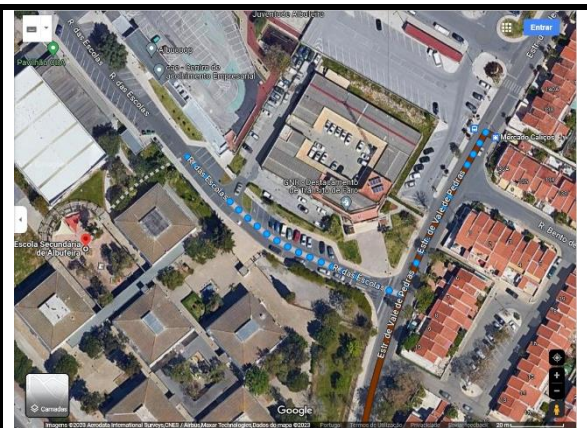
2-Catch bus route 7 to Mercado Calijos (+-10 minutes)

3-From Mercado Calijos walk 170m until Secundária pavilion – map 2

*take note the correct side of the road of the bus stop! Do not go in the wrong direction!



**Map 1 – walk from Rocamar to Beato Vicente/
Centro Amigo bus stop**



**Map 2 – walk from Mercado Calijos bus stop
to Secundária pavilion**

To: Pavilhão Desportivo da Guia (“Guia”)

Rua José Cabrita Santos, 8200 Guia

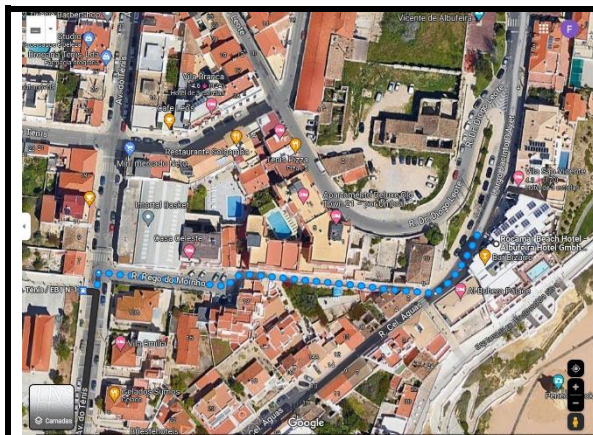
Bus route 8

1-From the Rocamar walk 180m to Av.^a Ténis/ EB 1 N.º 1 bus stop* – map 1

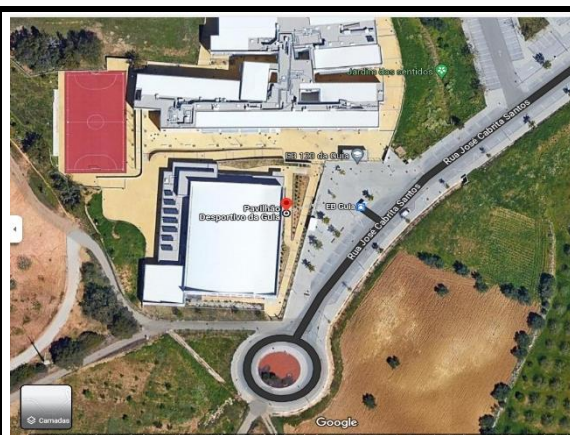
2-Catch bus route 8 to EB Guia bus stop (+31 minutes)

3-The EB Guia bus stop is in front of the Guia pavilion – map 2

*take note the correct side of the road of the bus stop! Do not go in the wrong direction!



Map 1 – walk from Rocamar to Av.^a Ténis/EB 1 N.º 1 bus stop

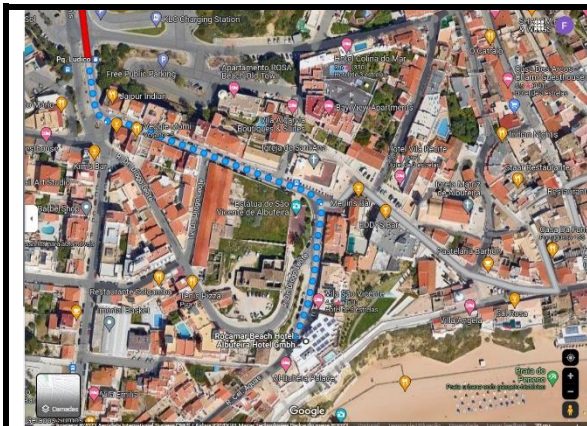


Map 2 – walk from EB Guia bus stop to Guia pavilion

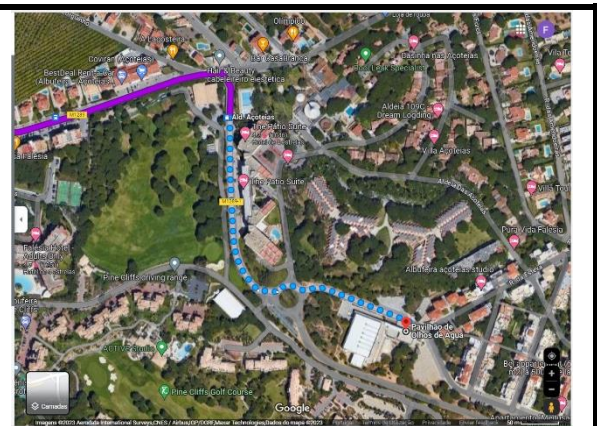
To: Pavilhão Desportivo de Olhos de Água (“Aqua”)
Urbanização Pinhal do Concelho 54, 8200 Albufeira

Bus routes 3 and 6

- 1-From the Rocamar walk 300m to Parque Lúdico bus stop* – map 1
 - 2-Catch bus route 3 to Av.ª Descobrimentos/Bombeiros bus stop (+-9 minutes)
 - 3-Catch bus route 6 to Aldeia Açoiteias (+-29 minutes)
 - 4-Walk from bus stop to Aqua pavilion (+- 400m) – map 2
- *take note the correct side of the road of the bus stop! Do not go in the wrong direction!



Map 1 – walk from Rocamar to Parque Lúdico bus stop



Map 2 – walk from Ald. Açoiteias bus stop to Aqua pavilion

To: Pavilhão Municipal de Albufeira (“Municipal 1” and “Municipal 2”)

Av.ª das Ilhas B, 8200-047 Albufeira

Bus routes 7 and 6

1-From the Rocamar Hotel walk 120m to Beato Vicente/Centro Amigo bus stop* – map 1

2-Catch bus route 7 to Av.ª Descobrimentos/Bombeiros (+4 minutes)

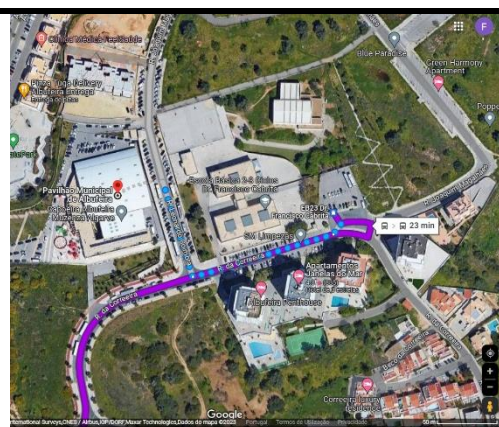
3-Catch bus route 6 to EB23 Dr. Francisco Cabrita bus stop (+5 minutes)

3-From bus stop walk 220m to Municipal 1 and 2 pavilion – map 2

*take note the correct side of the road of the bus stop! Do not go in the wrong direction!



Map 1 – walk from Rocamar to Beato Vicente/Centro Amigo bus stop



Map 2 – walk from EB23 Dr. Francisco Cabrita bus stop to Municipal 1 and 2 pavilion

To: Pavilhão Municipal Francisco Neves (“Imortal”)

Av.ª do Ténis, 8200-011 Albufeira

Walking

1-From the Rocamar walk +-100m to Imortal pavilion – map 1



Map 1 – walk from Rocamar to Imortal pavilion

To: Social Party

Hotel Paraíso Albufeira, Hotel Paraíso, R. do Município, 8200-161 Albufeira

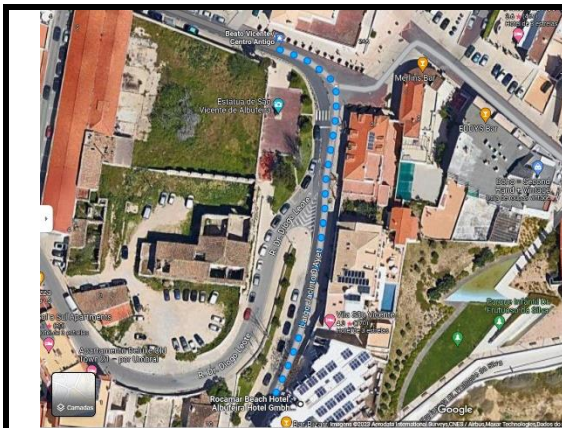
Bus route 7

1-From the Rocamar walk 120m to Beato Vicente/Centro Amigo bus stop* – map 1

2-Catch bus route 7 to Câmara Municipal bus stop (+5 minutes)

3-From the bus stop walk +-750m to Hotel Paraíso – map 2

*take note the correct side of the road of the bus stop! Do not go in the wrong direction!



**Map 1 – walk from Rocamar
to Beato Vicente/Centro Amigo bus stop**



**Map 2 – walk from Câmara Municipal bus stop
to Hotel Paraíso**