

Public transport information for participating teams in ESBA Albufeira Open 2023

From Regency Salgados Hotel & Spa

To: Opening Ceremony	1
To: Pavilhão da Escola Básica 2-3 ciclos Dr. Francisco Cabrita (“Cabrita”)	2
To: Pavilhão da Escola Básica Prof.ª Diamantina Negrão (“Negrão”)	3
To: Pavilhão da Escola Básica Secundária de Albufeira (“Básica”).....	4
To: Pavilhão da Escola Secundária de Albufeira (“Secundária”).....	5
To: Pavilhão Desportivo da Guia (“Guia”)	6
To: Pavilhão Desportivo de Olhos de Água (“Aqua”).....	7
To: Pavilhão Municipal de Albufeira (“Municipal 1” and “Municipal 2”)	8
To: Pavilhão Municipal Francisco Neves (“Imortal”)	9
To: Social Party	10

How to get from your hotel to the different events venues (recommended route):

Albufeira Open 2023 matches

FROM

Regency Salgados Hotel & Spa
Estrada dos Salgados, 8200-428, Guia

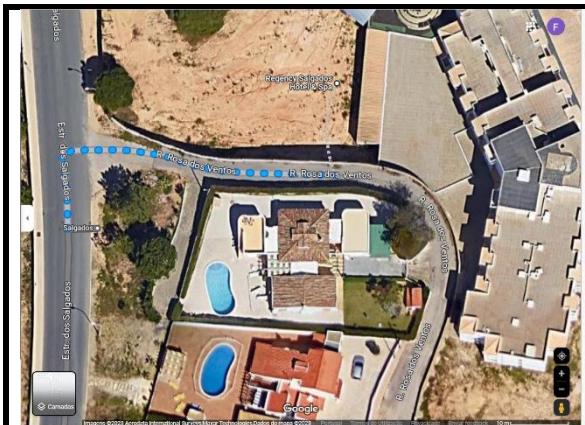
To: Opening Ceremony

Praça da Praia dos Pescadores, 8200-001 Albufeira

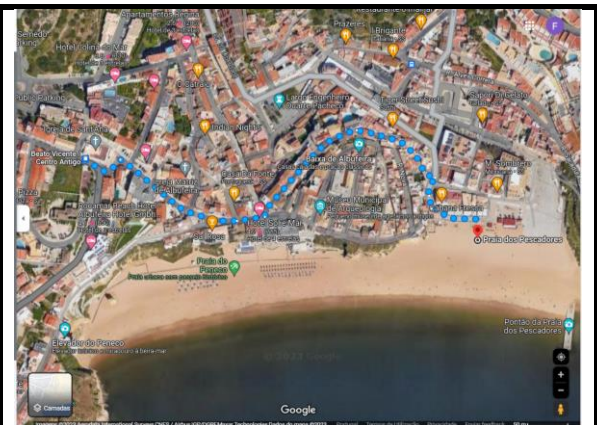
Bus route 7

- 1-From the Regency Salgados Hotel walk 60m to Salgados bus stop* – map 1
- 2-Catch bus route 7 to Beato Vicente/Centro Amigo bus stop (+-17 minutes)
- 3-From bus stop walk +-650m to Praça da Praia dos Pescadores – map 2

*take note the correct side of the road of the bus stop! Do not go in the wrong direction!



Map 1 – walk from Regency Salgados Hotel to Salgados bus stop



Map 2 – walk from Beato Vicente/Centro Amigo bus stop to Praça da Praia dos Pescadores

To: Pavilhão da Escola Básica 2-3 ciclos Dr. Francisco Cabrita (“Cabrita”)

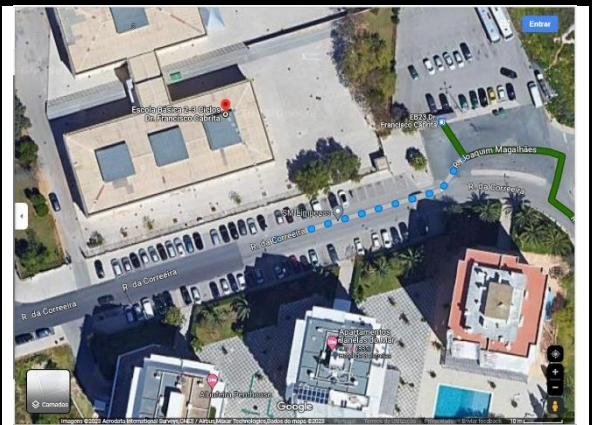
Rua da Correia 3, 8200-317 Albufeira

Bus routes 7 and 2

- 1-From the Regency Salgados Hotel walk 60m to Salgados bus stop* – map 1
 - 2-Catch bus route 7 to Camara Municipal bus stop (+-22 minutes)
 - 3-At the bus stop catch bus route 2 to EB23 Dr. Francisco Cabrita bus stop (+-19 minutes)
 - 4-The Cabrita pavilion is next to the EB23 Dr. Francisco Cabrita bus stop.
- *take note the correct side of the road of the bus stop! Do not go in the wrong direction!



Map 1 – walk from Regency Salgados Hotel to Salgados bus stop



Map 2 – walk from EB23 Dr. Francisco Cabrita bus stop to Cabrita pavilion

To: Pavilhão da Escola Básica Prof.^a Diamantina Negrão (“Negrão”)

Rua Prof.^a Diamantina Barreto Negrão 56, 8200-291 Albufeira

Bus routes 7 and 6

- 1-From the Regency Salgados Hotel walk 60m to Salgados bus stop* – map 1
- 2-Catch bus route 7 to Terminal Rodoviário bus stop (+-25 minutes)
- 3-Catch bus route 6 to EB23 Prof.^a Diamantina Negrão bus stop (+-13 minutes)
- 4-The Negrão pavilion is in front of the bus stop – map 2

*take note the correct side of the road of the bus stop! Do not go in the wrong direction!



Map 1 – walk from Regency Salgados Hotel to Salgados bus stop



Map 2 – walk from EB23 Prof.^a Diamantina Negrão bus stop to Negrão pavilion

To: Pavilhão da Escola Básica Secundária de Albufeira (“Básica”)

Vale Pedras, 8200-047 Albufeira

Bus routes 7 and 4

1-From the Regency Salgados Hotel walk 60m to Salgados bus stop* – map 1

2-Catch bus route 7 to Terminal Rodoviário bus stop (+-25 minutes)

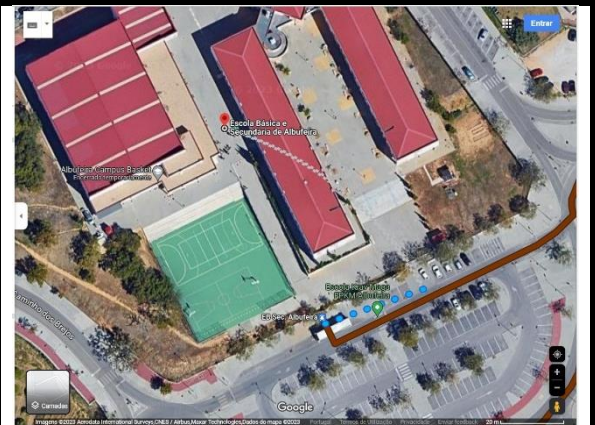
3-Catch bus route 4 to EB Sec. Albufeira bus stop (+-4 minutes)

4-The Básica pavilion is right in front of the bus stop – map 2

*take note the correct side of the road of the bus stop! Do not go in the wrong direction!



Map 1 – walk from Regency Salgados Hotel to Salgados bus stop



Map 2 – walk from EB Sec. Albufeira bus stop to Básica pavilion

To: Pavilhão da Escola Secundária de Albufeira (“Secundária”)

Rua das Escolas, 8200-126 Albufeira

Bus route 7

1-From the Regency Salgados Hotel walk 60m to Salgados bus stop* – map 1

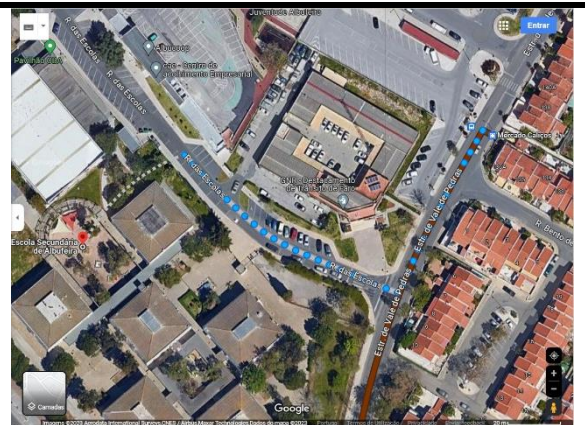
2-Catch bus route 7 to Mercado Caliços (+-23 minutes)

3-From Mercado Caliços walk 170m until Secundária pavilion – map 2

*take note the correct side of the road of the bus stop! Do not go in the wrong direction!



Map 1 – walk from Regency Salgados Hotel to Salgados bus stop



Map 2 – walk from Mercado Caliços bus stop to Secundária pavilion

To: Pavilhão Desportivo da Guia (“Guia”)

Rua José Cabrita Santos, 8200 Guia

Bus route 8

1-From the Regency Salgados Hotel walk 60m to Salgados bus stop* – map 1

2-Catch bus route 8 to EB Guia bus stop (+-15 minutes)

3-The Guia pavilion is in front of the bus stop – map 2

*take note the correct side of the road of the bus stop! Do not go in the wrong direction!



Map 1 – walk from Regency Salgados Hotel to Salgados bus stop



Map 2 – EB Guia bus stop in front of Guia pavilion

To: Pavilhão Desportivo de Olhos de Água (“Aqua”)

Urbanização Pinhal do Concelho 54, 8200 Albufeira

Bus routes 7 and 6

1-From the Regency Salgados Hotel walk 60m to Salgados bus stop* – map 1

2-Catch bus route 7 to Terminal Rodoviário bus stop (+-25 minutes)

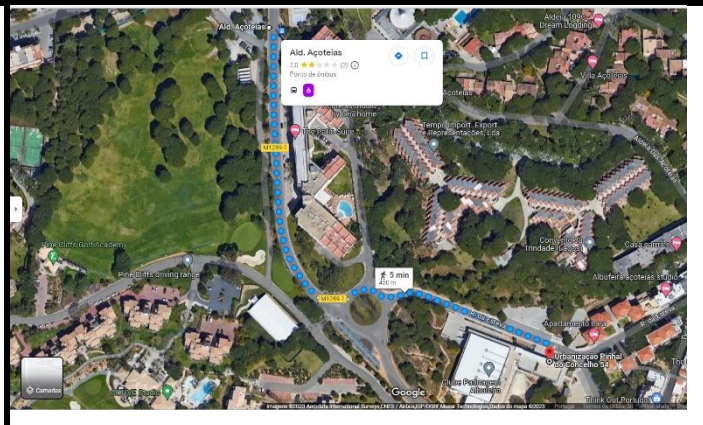
3-Catch bus route 6 to Ald. Açoiteias bus stop (+-32 minutes)

4-Walk from bus stop to Aqua pavilion (+- 400m) – map 2

*take note the correct side of the road of the bus stop! Do not go in the wrong direction!



Map 1 – walk from Regency Salgados Hotel to Salgados bus stop



Map 2 – walk from Ald. Açoiteias bus stop to Aqua pavilion

To: Pavilhão Municipal de Albufeira (“Municipal 1” and “Municipal 2”)

Av.ª das Ilhas B, 8200-047 Albufeira

Bus routes 7 and 6

- 1-From the Regency Salgados Hotel walk 60m to Salgados bus stop* – map 1
 - 2-Catch bus route 7 to Av.ª Descobrimentos/Bombeiros bus stop (+-21 minutes)
 - 3-Catch bus route 6 to EB23 Dr. Francisco Cabrita bus stop (+-5 minutes)
 - 4-Walk 220m from EB23 Dr. Francisco Cabrita bus stop to Municipal 1 and 2 pavilion – map 2
- *take note the correct side of the road of the bus stop! Do not go in the wrong direction!



Map 1 – walk from Regency Salgados Hotel to Salgados bus stop



Map 2 – walk from EB23 Dr. Francisco Cabrita bus stop to Municipal 1 and 2 pavilion

To: Pavilhão Municipal Francisco Neves (“Imortal”)

Av.ª do Ténis, 8200-011 Albufeira

Bus route 7

1-From the Regency Salgados Hotel walk 60m to Salgados bus stop* – map 1

2-Catch bus route 7 to Rua Coronel Águas bus stop (+-17 minutes)

3-From the bus stop walk 170m to the Imortal pavilion – map 2

*take note the correct side of the road of the bus stop! Do not go in the wrong direction!



Map 1 – walk from Regency Salgados Hotel to Salgados bus stop



Map 2 – walk from Coronel Águas bus stop to Imortal pavilion

To: Social Party

Hotel Paraíso Albufeira, Hotel Paraíso, R. do Município, 8200-161 Albufeira

Bus route 7

1-From the Regency Salgados Hotel walk 60m to Salgados bus stop* – map 1

2-Catch bus route 7 to Câmara Municipal bus stop (+22 minutes)

3-From the bus stop walk 750m to Hotel Paraíso – map 2

*take note the correct side of the road of the bus stop! Do not go in the wrong direction!



Map 1 – walk from Regency Salgados Hotel to Salgados bus stop



Map 2 – walk from Câmara Municipal bus stop to Hotel Paraíso