

Public transport information for participating teams in ESBA Albufeira Open 2023

From Muthu Oura Praia Hotel

To: Opening Ceremony.....	1
To: Pavilhão da Escola Básica 2-3 ciclos Dr. Francisco Cabrita (“Cabrita”).....	2
To: Pavilhão da Escola Básica Prof. ^a Diamantina Negrão (“Negrão”).....	3
To: Pavilhão da Escola Básica Secundária de Albufeira (“Básica”).....	4
To: Pavilhão da Escola Secundária de Albufeira (“Secundária”).....	5
To: Pavilhão Desportivo da Guia (“Guia”).....	6
To: Pavilhão Desportivo de Olhos de Água (“Aqua”).....	7
To: Pavilhão Municipal de Albufeira (“Municipal 1” and “Municipal 2”).....	8
To: Pavilhão Municipal Francisco Neves (“Imortal”).....	9
To: Social Party.....	10

How to get from your hotel to the different events venues:

Albufeira Open 2023 matches

FROM

Muthu Oura Praia Hotel

Edifício Oura Praia, Estrada de Santa Eulália, 8200-911 Albufeira

To: Opening Ceremony

Praça da Praia dos Pescadores, 8200-001 Albufeira

Bus route 4

1-From the Muthu Oura Praia Hotel walk 200m to Pedra dos Bicos bus stop* – map 1

2-Catch bus route 4 to Câmara Municipal bus stop (+-9 minutes)

3-From bus stop walk +-550m to Praça da Praia dos Pescadores – map 2

*take note the correct side of the road of the bus stop! Do not go in the wrong direction!



**Map 1 – walk from Muthu Oura Praia Hotel
To Pedra dos Bicos bus stop**



**Map 2 – walk from Câmara Municipal bus
stop to Praça da Praia dos Pescadores**

To: Pavilhão da Escola Básica 2-3 ciclos Dr. Francisco Cabrita (“Cabrita”)

Rua da Correieira 3, 8200-317 Albufeira

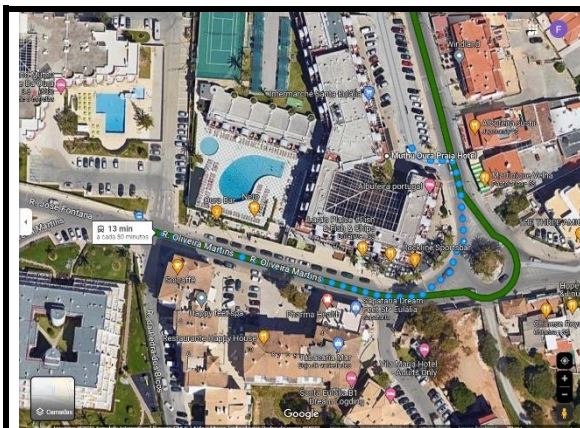
Bus route 2

1-From the Muthu Oura Praia Hotel walk 200m to Pedra dos Bicos bus stop* – map 1

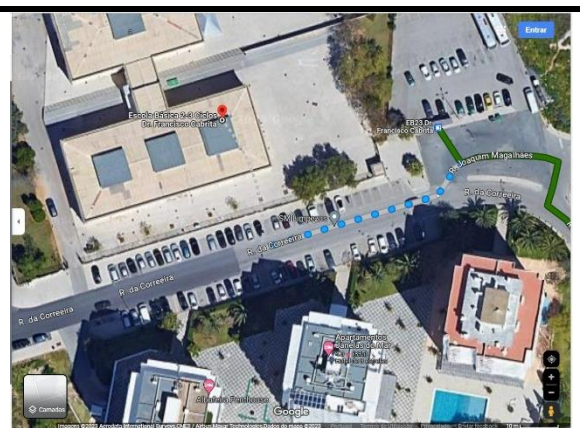
2-Catch bus route 2 to EB23 Dr. Francisco Cabrita bus stop (+-10 minutes)

3-The Cabrita pavilion is next to the EB23 Dr. Francisco Cabrita bus stop.

*take note the correct side of the road of the bus stop! Do not go in the wrong direction!



Map 1 – walk from Muthu Oura Praia Hotel to Pedra dos Bicos bus stop



Map 2 – walk from EB23 Dr. Francisco Cabrita bus stop to Cabrita pavilion

To: Pavilhão da Escola Básica Prof.ª Diamantina Negrão (“Negrão”)

Rua Prof.ª Diamantina Barreto Negrão 56, 8200-291 Albufeira

Bus route 6

1-From the Muthu Ora Praia Hotel walk 170m until St.ª Eulália bus stop* – map 1

2-Catch bus route 6 to EB23 Prof.ª Diamantina Negrão bus stop (+8 minutes)

3-The Negrão pavilion is across the road from the bus stop – map 2

*take note the correct side of the road of the bus stop! Do not go in the wrong direction!



Map 1 – walk from Muthu Ora Praia Hotel to St.ª Eulália bus stop



Map 2 – walk from EB23 Prof.ª Diamantina Negrão bus stop to Negrão pavilion

To: Pavilhão da Escola Básica Secundária de Albufeira (“Básica”)

Vale Pedras, 8200-047 Albufeira

Bus route 4

1-From the Muthu Oura Praia Hotel walk 200m to Pedra dos Bicos bus stop* – map 1

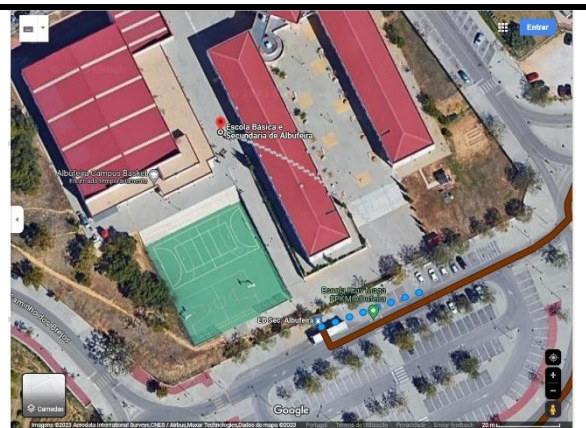
2-Catch bus route 4 to EB Sec. Albufeira bus stop (+-17 minutes)

3-The Básica pavilion is right in front of the bus stop – map 2

*take note the correct side of the road of the bus stop! Do not go in the wrong direction!



Map 1 – walk from Muthu Oura Praia Hotel to Pedra dos Bicos bus stop



Map 2 – walk from EB Sec. Albufeira bus stop to Básica pavilion

To: Pavilhão da Escola Secundária de Albufeira (“Secundária”)

Rua das Escolas, 8200-126 Albufeira

Bus route 9

1-From the Muthu Ora Praia Hotel walk 170m to St.ª Eulália bus stop* – map 1

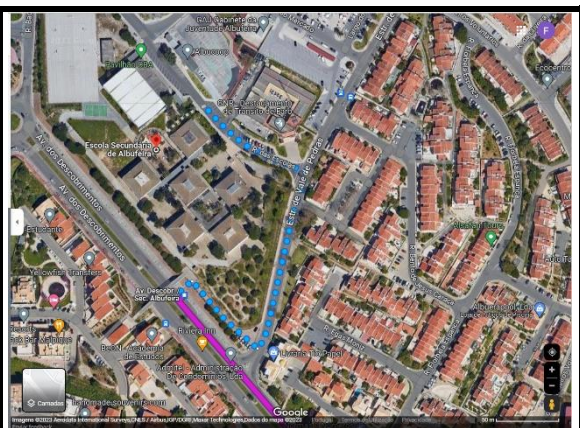
2-Catch bus route 9 to Av.ª Descobrimentos/Sec. Albufeira bus stop (+-6 minutes)

3-From Av.ª Descobrimentos/Sec. Albufeira walk 350m until Secundária pavilion – map 2

*take note the correct side of the road of the bus stop! Do not go in the wrong direction!



Map 1 – walk from Muthu Ora Praia Hotel to St.ª Eulália bus stop



Map 2 – walk from Av.ª Descobrimentos/Sec. Albufeira bus stop to Secundária pavilion

To: Pavilhão Desportivo da Guia (“Guia”)

Rua José Cabrita Santos, 8200 Guia

Bus routes 9 and 7

1-From the Muthu Oura Praia Hotel walk 170m to St.^a Eulália bus stop* – map 1

2-Catch bus route 9 to Terminal Rodoviário bus stop (+-12 minutes)

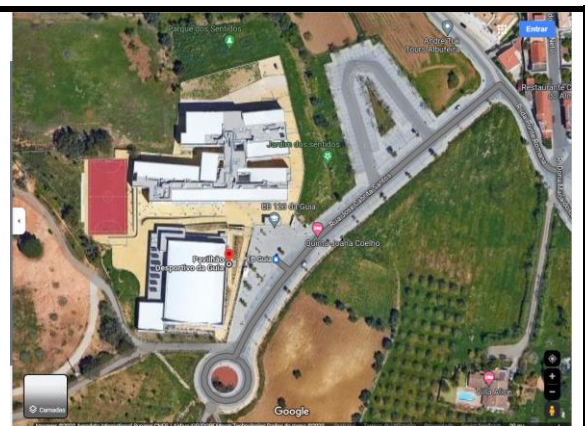
3-From Terminal Rodoviário catch bus route 7 to EB Guia bus stop (+-20 minutes)

4-The Guia pavilion is in front of the bus stop – map 2

*take note the correct side of the road of the bus stop! Do not go in the wrong direction!



Map 1 – walk from Muthu Oura Praia Hotel to St.^a Eulália bus stop



Map 2 – EB Guia bus stop in front of Guia pavilion

To: Pavilhão Desportivo de Olhos de Água (“Aqua”)
Urbanização Pinhal do Concelho 54, 8200 Albufeira

Bus route 6

1-From the Muthu Oura Praia Hotel walk 180m to St.^a Eulália bus stop* – map 1

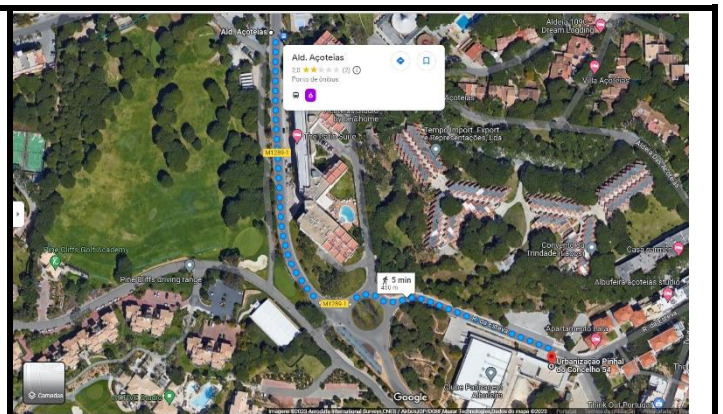
2-Catch bus route 6 to Ald. Açoiteias bus stop (+-20 minutes)

3-Walk from bus stop to Aqua pavilion (+- 400m) – map 2

*take note the correct side of the road of the bus stop! Do not go in the wrong direction!



Map 1 – walk from Muthu Oura Praia Hotel to St.^a Eulália bus stop



Map 2 – walk from Ald. Açoiteias bus stop to Aqua pavilion

To: Pavilhão Municipal de Albufeira (“Municipal 1” and “Municipal 2”)

Av.ª das Ilhas B, 8200-047 Albufeira

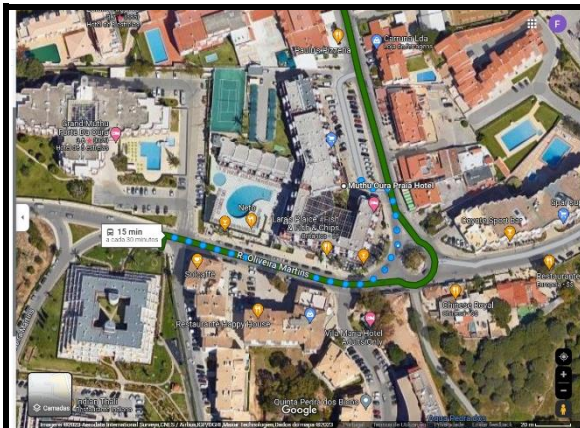
Bus route 2

1-From the Muthu Ora Praia Hotel walk 200m to Pedra dos Bicos bus stop* – map 1

2-Catch bus route 2 to EB23 Dr. Francisco Cabrita bus stop (+-11 minutes)

3-Walk 220m from EB23 Dr. Francisco Cabrita bus stop to Municipal 1 and 2 pavilion – map 2

*take note the correct side of the road of the bus stop! Do not go in the wrong direction!



Map 1 – walk from Muthu Ora Praia Hotel to Pedra dos Bicos bus stop



Map 2 – walk from EB23 Dr. Francisco Cabrita bus stop to Municipal 1 and 2 pavilion

To: Pavilhão Municipal Francisco Neves (“Imortal”)

Av.ª do Ténis, 8200-011 Albufeira

Bus routes 6 and 8

1-From the Muthu Ora Praia Hotel walk 170m to St.ª Eulália bus stop* – map 1

2-Catch bus route 6 to Mercado Caliços bus stop (+-19 minutes)

3-Cross the road to other bus stop* and wait for bus route 8 – map 2

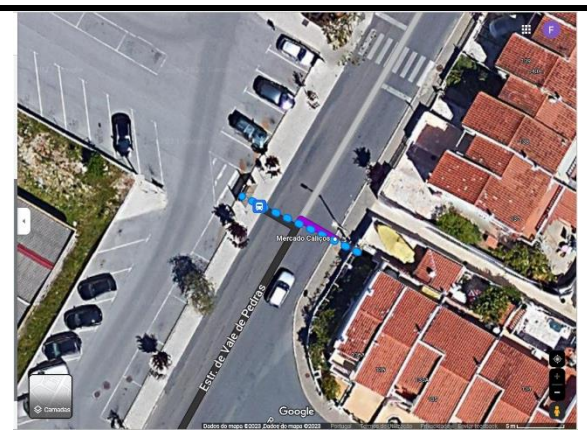
4-Catch the bus route 8 to Av.ª Ténis/EB1 N.º1 (+- 5 minutes)

5-Walk from the bus stop to Imortal pavilion – map 3

*take note the correct side of the road of the bus stop! Do not go in the wrong direction!



Map 1 – walk from Muthu Ora Praia Hotel to St.ª Eulália bus stop



Map 2 – cross the road to other bus stop and wait for bus route 8



Map 3 – walk from Av.ª Ténis/EB1 N.º 1 bus stop to Imortal pavilion

To: Social Party

Hotel Paraíso Albufeira, Hotel Paraíso, R. do Município, 8200-161 Albufeira

Bus route 6

1-From the Muthu Ora Praia Hotel walk 280m to Posto de Turismo bus stop* – map 1

2-Catch bus route 6 to Rotunda dos Relógios bus stop (+-16 minutes)

3-From the bus stop walk 350m to the Hotel Paraíso – map 2

*take note the correct side of the road of the bus stop! Do not go in the wrong direction!



Map 1 – walk from Muthu Ora Praia Hotel to Posto do Turismo bus stop



Map 2 – walk from Rotunda dos Relógios bus stop do Hotel Paraíso