

Public transport information for participating teams in ESBA Albufeira Open 2023

From Muthu Clube Praia daoura

To: Opening Ceremony	1
To: Pavilhão da Escola Básica 2-3 ciclos Dr. Francisco Cabrita (“Cabrita”)	2
To: Pavilhão da Escola Básica Prof.ª Diamantina Negrão (“Negrão”)	3
To: Pavilhão da Escola Básica Secundária de Albufeira (“Básica”).....	4
To: Pavilhão da Escola Secundária de Albufeira (“Secundária”).....	5
To: Pavilhão Desportivo da Guia (“Guia”)	6
To: Pavilhão Desportivo de Olhos de Água (“Aqua”).....	7
To: Pavilhão Municipal de Albufeira (“Municipal 1” and “Municipal 2”)	8
To: Pavilhão Municipal Francisco Neves (“Imortal”)	9
To: Social Party	10

How to get from your hotel to the different events venues (recommended venues):

Albufeira Open 2023 matches

FROM

Muthu Clube Praia da Oura

Rua Oliveira Martins, 8200-269 Albufeira

To: Opening Ceremony

Praça da Praia dos Pescadores, 8200-001 Albufeira

Bus route 4

1-From the Muthu Clube Praia da Oura walk 290m to Pedra dos Bicos bus stop* – map 1

2-Catch bus route 4 to Câmara Municipal bus stop (+9 minutes)

3-From bus stop walk +550m to Praça da Praia dos Pescadores – map 2

*take note the correct side of the road of the bus stop! Do not go in the wrong direction!



Map 1 – walk from Muthu Clube Praia da Oura to Pedra dos Bicos bus stop



Map 2 – walk from Câmara Municipal bus stop to Praça da Praia dos Pescadores

To: Pavilhão da Escola Básica 2-3 ciclos Dr. Francisco Cabrita (“Cabrita”)

Rua da Correia 3, 8200-317 Albufeira

Bus route 2

1-From the Muthu Clube Praia da Oura walk 290m to Pedra dos Bicos bus stop* – map 1

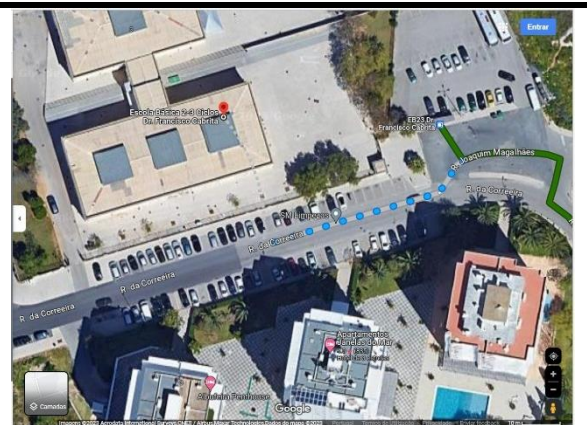
2-Catch bus route 2 to EB23 Dr. Francisco Cabrita bus stop (+-10 minutes)

3-The Cabrita pavilion is next to the EB23 Dr. Francisco Cabrita bus stop – map 2

*take note the correct side of the road of the bus stop! Do not go in the wrong direction!



Map 1 – walk from Muthu Clube Praia da Oura to Pedra dos Bicos bus stop



Map 2 – walk from EB23 Dr. Francisco Cabrita bus stop to Cabrita pavilion

To: Pavilhão da Escola Básica Prof.^a Diamantina Negrão (“Negrão”)

Rua Prof.^a Diamantina Barreto Negrão 56, 8200-291 Albufeira

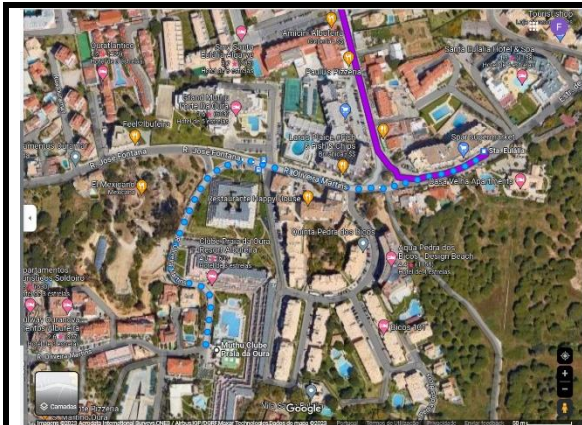
Bus route 6

1-From the Muthu Clube Praia da Oura walk 550m until St.^a Eulália bus stop* – map 1

2-Catch bus route 6 to EB23 Prof.^a Diamantina Negrão bus stop (+8 minutes)

3-The Negrão pavilion is across the road from the bus stop – map 2

*take note the correct side of the road of the bus stop! Do not go in the wrong direction!



Map 1 – walk from Muthu Clube Praia da Oura to St.^a Eulália bus stop



Map 2 – walk from EB23 Prof.^a Diamantina Negrão bus stop to Negrão pavilion

To: Pavilhão da Escola Básica Secundária de Albufeira (“Básica”)

Vale Pedras, 8200-047 Albufeira

Bus route 4

1-From the Muthu Clube Praia da Oura walk 290m to Pedra dos Bicos bus stop* – map 1

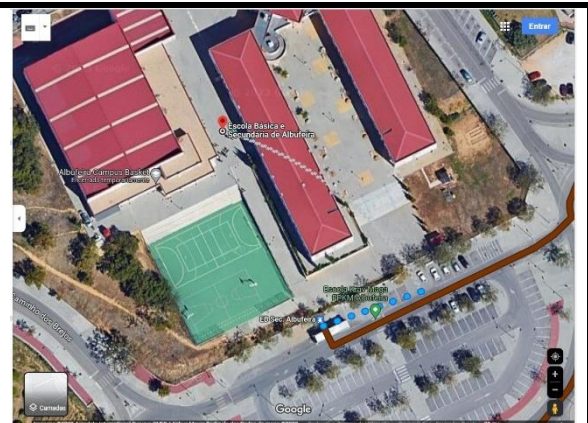
2-Catch bus route 4 to EB Sec. Albufeira bus stop (+-17 minutes)

3-The Básica pavilion is right in front of the bus stop – map 2

*take note the correct side of the road of the bus stop! Do not go in the wrong direction!



Map 1 – walk from Muthu Clube Praia da Oura to Pedra dos Bicos bus stop



Map 2 – walk from EB Sec. Albufeira bus stop to Básica pavilion

To: Pavilhão da Escola Secundária de Albufeira (“Secundária”)

Rua das Escolas, 8200-126 Albufeira

Bus route 4

1-From the Muthu Clube Praia da Oura walk 290m to Pedra dos Bicos bus stop* – map 1

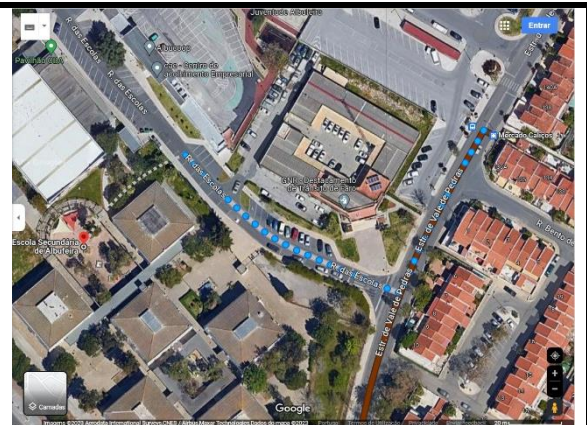
2-Catch bus route 4 to Mercado Caliços (+-11 minutes)

3-From Mercado Caliços walk 170m until Secundária pavilion – map 2

*take note the correct side of the road of the bus stop! Do not go in the wrong direction!



Map 1 – walk from Muthu Clube Praia da Oura to Pedra dos Bicos bus stop



Map 2 – walk from Mercado Caliços bus stop to Secundária pavilion

To: Pavilhão Desportivo da Guia (“Guia”)

Rua José Cabrita Santos, 8200 Guia

Bus routes 4 and 7

1-From the Muthu Clube Praia da Oura walk 290m to Pedra dos Bicos bus stop* – map 1

2-Catch bus route 4 to Terminal Rodoviário bus stop (+-13 minutes)

3-From Terminal Rodoviário catch bus route 7 to EB Guia bus stop (+-20 minutes)

4-The Guia pavilion is in front of the bus stop – map 2

*take note the correct side of the road of the bus stop! Do not go in the wrong direction!



Map 1 – walk from Muthu Clube Praia da Oura to Pedra dos Bicos bus stop



Map 2 – EB Guia bus stop in front of Guia pavilion

To: Pavilhão Desportivo de Olhos de Água (“Aqua”)

Urbanização Pinhal do Concelho 54, 8200 Albufeira

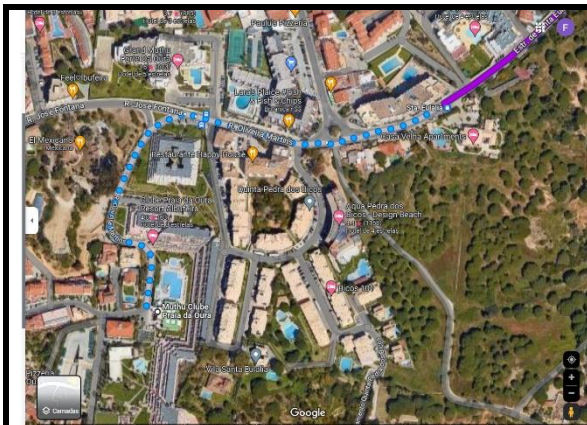
Bus route 6

1-From the Muthu Clube Praia da Oura walk 550m to St.ª Eulália bus stop* – map 1

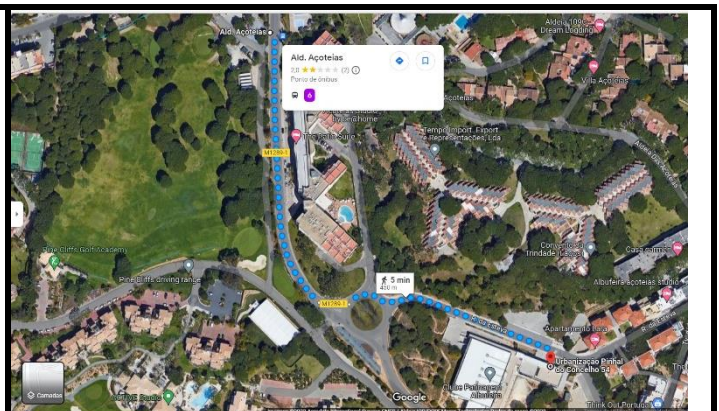
2-Catch bus route 6 to Ald. Açoiteias bus stop (+-20 minutes)

3-Walk +-400m from bus stop to Aqua pavilion – map 2

*take note the correct side of the road of the bus stop! Do not go in the wrong direction!



Map 1 – walk from Muthu Clube Praia da Oura to St.ª Eulália bus stop



Map 2 – walk from Ald. Açoiteias bus stop to Aqua pavilion

To: Pavilhão Municipal de Albufeira (“Municipal 1” and “Municipal 2”)

Av.ª das Ilhas B, 8200-047 Albufeira

Bus route 2

1-From the Muthu Clube Praia da Oura walk 290m to Pedra dos Bicos bus stop* – map 1

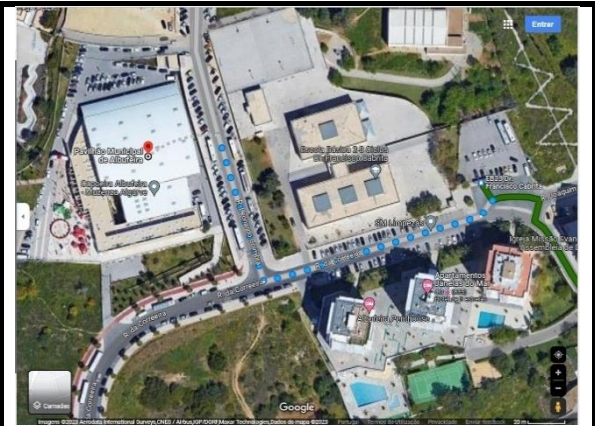
2-Catch bus route 2 to EB23 Dr. Francisco Cabrita bus stop (+-10 minutes)

3-Walk 220m from EB23 Dr. Francisco Cabrita bus stop to Municipal 1 and 2 pavilion – map 2

*take note the correct side of the road of the bus stop! Do not go in the wrong direction!



Map 1 – walk from Muthu Clube Praia da Oura to Pedra dos Bicos bus stop



Map 2 – walk from EB23 Dr. Francisco Cabrita bus stop to Municipal 1 and 2 pavilion

To: Pavilhão Municipal Francisco Neves (“Imortal”)

Av.ª do Ténis, 8200-011 Albufeira

Bus route 2

1-From the Muthu Clube Praia da Oura walk 290m to Pedra dos Bicos bus stop* – map 1

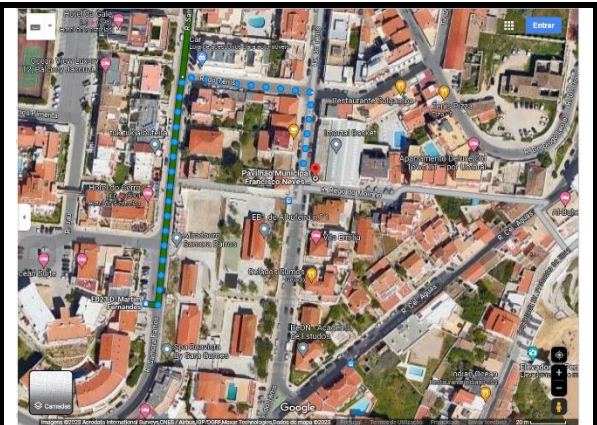
2-Catch bus route 2 to EB23 D. Martim Fernandes bus stop (+-25 minutes)

4-From the bus stop walk 250m to the Imortal pavilion – map 2

*take note the correct side of the road of the bus stop! Do not go in the wrong direction!



Map 1 – walk from Muthu Clube Praia da Oura to Pedra dos Bicos bus stop



Map 2 – walk from EB23 D. Martim Fernandes bus stop to Imortal pavilion

To: Social Party

Hotel Paraíso Albufeira, Hotel Paraíso, R. do Município, 8200-161 Albufeira

Bus route 2

1-From the Muthu Clube Praia da Oura walk 290m to Pedra dos Bicos bus stop* – map 1

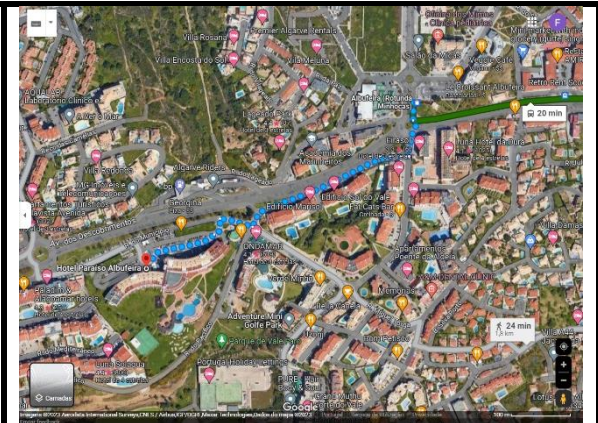
2-Catch bus route 2 to Rotunda das Minhocas bus stop (+7 minutes)

4-From the bus stop walk 600m to Hotel Paraíso – map 2

*take note the correct side of the road of the bus stop! Do not go in the wrong direction!



Map 1 – walk from Muthu Clube Praia da Oura to Pedra dos Bicos bus stop



Map 2 – walk from Rotunda Minhocas bus stop to Hotel Paraíso