

Public transport information for participating teams in ESBA Albufeira Open 2023

From Monica Isabel Beach Club

To: Opening Ceremony	1
To: Pavilhão da Escola Básica 2-3 ciclos Dr. Francisco Cabrita (“Cabrita”)	2
To: Pavilhão da Escola Básica Prof.ª Diamantina Negrão (“Negrão”)	3
To: Pavilhão da Escola Básica Secundária de Albufeira (“Básica”).....	4
To: Pavilhão da Escola Secundária de Albufeira (“Secundária”).....	5
To: Pavilhão Desportivo da Guia (“Guia”)	6
To: Pavilhão Desportivo de Olhos de Água (“Aqua”).....	7
To: Pavilhão Municipal de Albufeira (“Municipal 1” and “Municipal 2”)	8
To: Pavilhão Municipal Francisco Neves (“Imortal”)	9
To: Social Party	10

How to get from your hotel to the different events venues (recommended route):

Albufeira Open 2023 matches

FROM

Monica Isabel Beach Club

Beco do Forte de São João, 8200-325 Albufeira

To: Opening Ceremony

Praça da Praia dos Pescadores, 8200-001 Albufeira

Bus route 4

1-From the Monica Isabel Beach Club walk 240m to Forte S. João bus stop* – map 1

2-Catch bus route 4 to Câmara Municipal bus stop (+5 minutes)

3-From bus stop walk +550m to Praça da Praia dos Pescadores – map 2

*take note the correct side of the road of the bus stop! Do not go in the wrong direction!



Map 1 – walk from Monica Isabel Beach Club to Forte S. João bus stop



Map 2 – walk from Câmara Municipal bus stop to Praça da Praia dos Pescadores

To: Pavilhão da Escola Básica 2-3 ciclos Dr. Francisco Cabrita (“Cabrita”)

Rua da Correia 3, 8200-317 Albufeira

Bus route 2

1-From the Monica Isabel Beach Club walk 240m to Forte S. João bus stop* – map 1

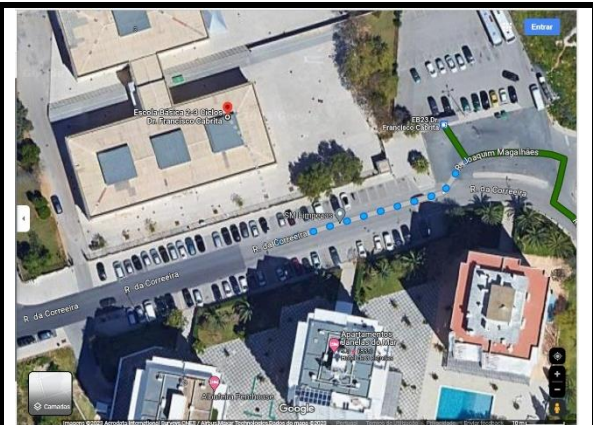
2-Catch bus route 2 to EB23 Dr. Francisco Cabrita bus stop (+-15 minutes)

3-The Cabrita pavilion is next to the EB23 Dr. Francisco Cabrita bus stop.

*take note the correct side of the road of the bus stop! Do not go in the wrong direction!



Map 1 – walk from Monica Isabel Beach Club to Forte S. João bus stop



Map 2 – walk from EB23 Dr. Francisco Cabrita bus stop to Cabrita pavilion

To: Pavilhão da Escola Básica Prof.^a Diamantina Negrão (“Negrão”)

Rua Prof.^a Diamantina Barreto Negrão 56, 8200-291 Albufeira

Bus routes 2 and 6

- 1-From the Monica Isabel Beach Club walk 240m to Forte S. João bus stop* – map 1
 - 2-Catch bus route 2 to Rot. Esfera Armilar Sul bus stop (+-8 minutes)
 - 3-Catch bus route 6 from Rot. Esfera Armilar Sul bus stop to EB23 Prof. Diamantina Negrão bus stop (+-5 minutes)
 - 4-The Negrão pavilion is across the road from the bus stop – map 2
- *take note the correct side of the road of the bus stop! Do not go in the wrong direction!



Map 1 – walk from Monica Isabel Beach Club to Forte S. João bus stop



Map 2 – walk from EB23 Prof.^a Diamantina Negrão bus stop to Negrão pavilion

To: Pavilhão da Escola Básica Secundária de Albufeira (“Básica”)

Vale Pedras, 8200-047 Albufeira

Bus route 4

1-From the Monica Isabel Beach Club walk 240m to Forte S. João bus stop* – map 1

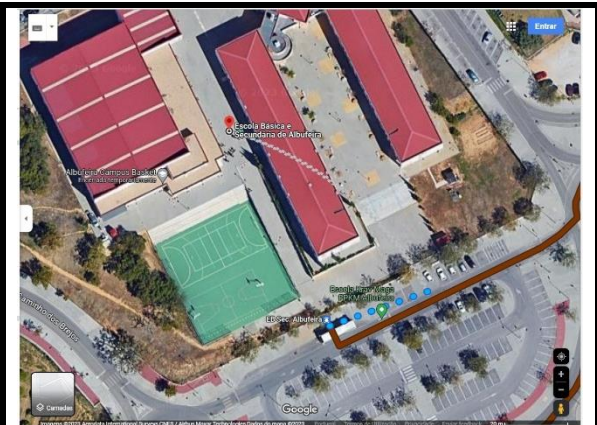
2-Catch bus route 4 to EB Sec. Albufeira bus stop (+-16 minutes)

3-The Básica pavilion is right in front of the bus stop – map 2

*take note the correct side of the road of the bus stop! Do not go in the wrong direction!



Map 1 – walk from Monica Isabel Beach Club to Forte S. João bus stop



Map 2 – walk from EB Sec. Albufeira bus stop to Básica pavilion

To: Pavilhão da Escola Secundária de Albufeira (“Secundária”)

Rua das Escolas, 8200-126 Albufeira

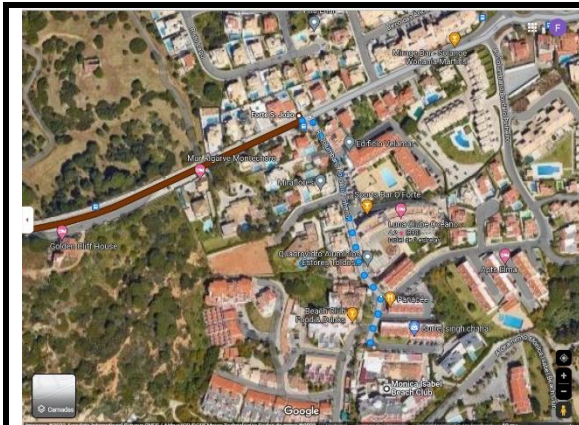
Bus route 4

1-From the Monica Isabel Beach Club walk 240m to Forte S. João bus stop* – map 1

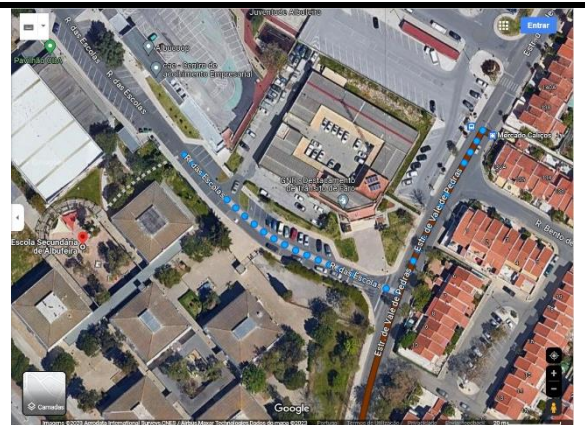
2-Catch bus route 4 to Mercado Caliços (+-7 minutes)

3-From Mercado Caliços walk 170m until Secundária pavilion – map 2

*take note the correct side of the road of the bus stop! Do not go in the wrong direction!



Map 1 – walk from Monica Isabel Beach Club to Forte S. João bus stop



Map 2 – walk from Mercado Caliços bus stop to Secundária pavilion

To: Pavilhão Desportivo da Guia (“Guia”)

Rua José Cabrita Santos, 8200 Guia

Bus routes 4 and 7

1-From the Monica Isabel Beach Club walk 240m to Forte S. João bus stop* – map 1

2-Catch bus route 4 to Terminal Rodoviário bus stop (+9 minutes)

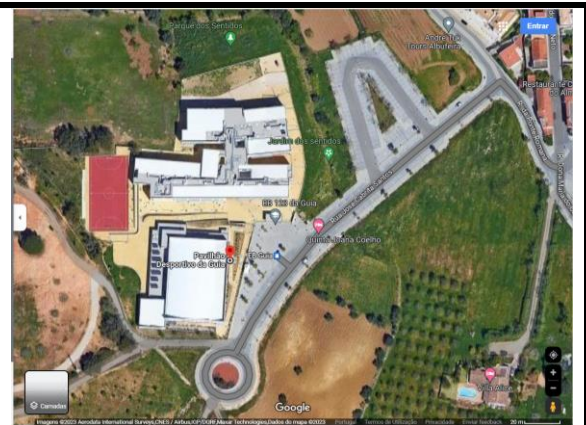
3-From Terminal Rodoviário catch bus route 7 to EB Guia bus stop (+20 minutes)

4-The Guia pavilion is in front of the bus stop – map 2

*take note the correct side of the road of the bus stop! Do not go in the wrong direction!



Map 1 – walk from Monica Isabel Beach Club to Forte S. João bus stop



Map 2 – EB Guia bus stop in front of Guia pavilion

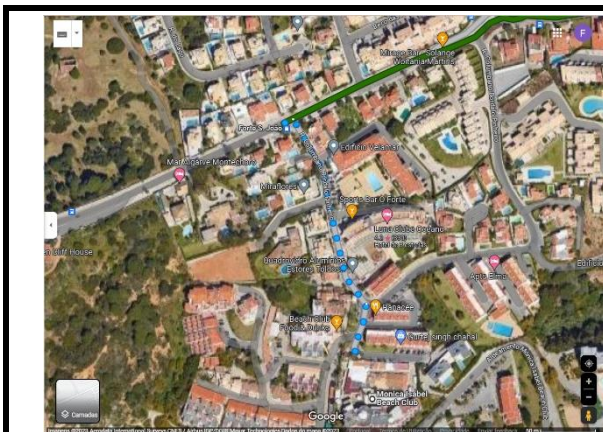
To: Pavilhão Desportivo de Olhos de Água (“Aqua”)

Urbanização Pinhal do Concelho 54, 8200 Albufeira

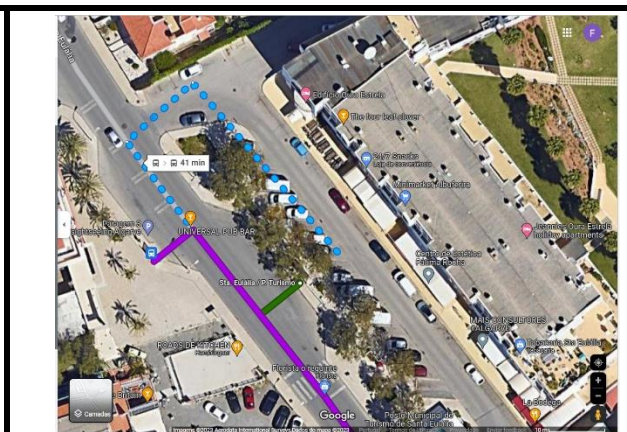
Bus routes 2 and 6

- 1-From the Monica Isabel Beach Club walk 240m to Forte S. João bus stop* – map 1
- 2-Catch bus route 2 to St.ª Eulália/ Posto Turismo bus stop (+6 minutes)
- 3-From St.ª Eulália/ Posto Turismo bus stop cross to the other bus stop and catch bus route 6 to Aldeia Açoiteias bus stop (+13 minutes) – map 2
- 4-Walk from bus stop to Aqua pavilion (+- 400m) – map 3

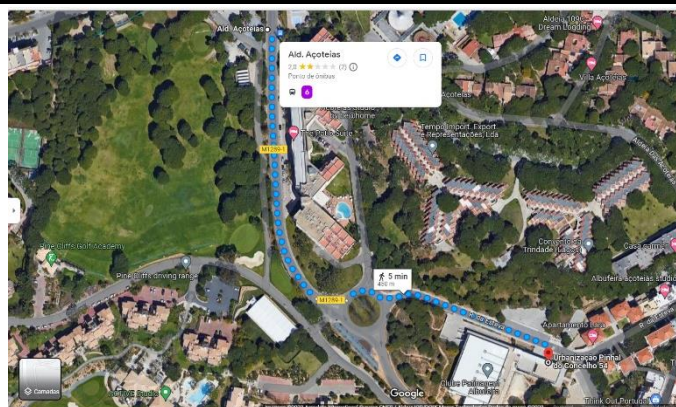
*take note the correct side of the road of the bus stop! Do not go in the wrong direction!



Map 1 – Walk from the Monica Isabel Beach Club to Forte S. João bus stop



Map 2 – At St.ª Eulália/ Posto Turismo bus stop cross to the other bus stop and catch bus route 6 to Aldeia Açoiteias bus stop



Map 3 – walk from Ald. Açoiteias bus stop to Aqua pavilion

To: Pavilhão Municipal de Albufeira (“Municipal 1” and “Municipal 2”)

Av.ª das Ilhas B, 8200-047 Albufeira

Bus route 2

1-From the Monica Isabel Beach Club walk 240m to Forte S. João bus stop* – map 1

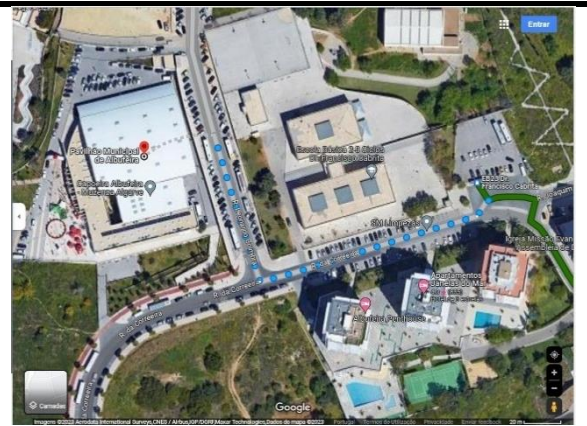
2-Catch bus route 2 to EB23 Dr. Francisco Cabrita bus stop (+-15 minutes)

3-Walk 220m from EB23 Dr. Francisco Cabrita bus stop to Municipal 1 and 2 pavilion – map 2

*take note the correct side of the road of the bus stop! Do not go in the wrong direction!



Map 1 – Walk from the Monica Isabel Beach Club to Forte S. João bus stop



Map 2 – walk from EB23 Dr. Francisco Cabrita bus stop to Municipal 1 and 2 pavilion

To: Pavilhão Municipal Francisco Neves (“Imortal”)

Av.ª do Ténis, 8200-011 Albufeira

Bus route 2

1-From the Monica Isabel Beach Club walk 240m to Forte S. João bus stop* – map 1

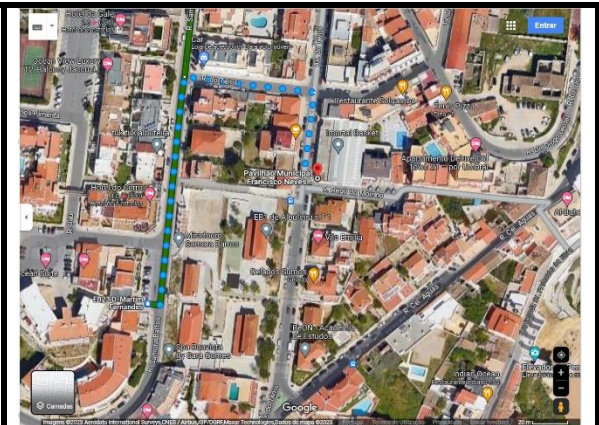
2-Catch bus route 2 to EB23 D. Martim Fernandes bus stop (+-30 minutes)

3-From the bus stop walk 250m to the Imortal pavilion – map 2

*take note the correct side of the road of the bus stop! Do not go in the wrong direction!



Map 1 – Walk from the Monica Isabel Beach Club to Forte S. João bus stop



Map 2 – walk from EB23 D. Martim Fernandes bus stop to Imortal pavilion

To: Social Party

Hotel Paraíso Albufeira, Hotel Paraíso, R. do Município, 8200-161 Albufeira

Bus route 4

1-From the Monica Isabel Beach Club walk 240m to Forte S. João bus stop* – map 1

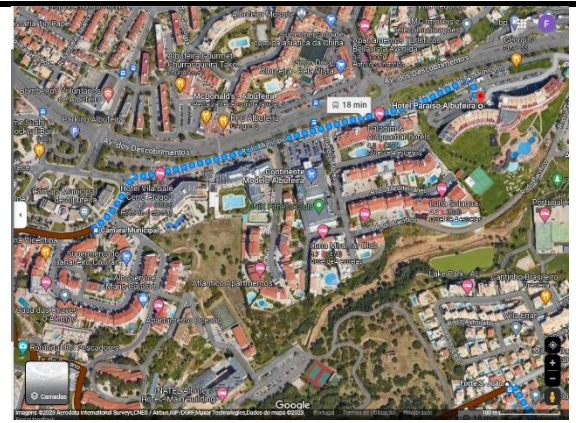
2-Catch bus route 4 to Câmara Municipal bus stop (+5 minutes)

3-From Câmara Municipal bus stop walk 750m to Hotel Paraíso – map 2

*take note the correct side of the road of the bus stop! Do not go in the wrong direction!



Map 1 – walk from Monica Isabel Beach Club to Forte S. João bus stop



Map 2 – EB Guia bus stop in front of Guia pavilion