

# Public transport information for participating teams in ESBA Albufeira Open 2023

## From Hotel Janelas do Mar

To: Opening Ceremony .....	1
To: Pavilhão da Escola Básica 2-3 ciclos Dr. Francisco Cabrita (“Cabrita”) .....	2
To: Pavilhão da Escola Básica Prof.ª Diamantina Negrão (“Negrão”) .....	3
To: Pavilhão da Escola Básica Secundária de Albufeira (“Básica”).....	4
To: Pavilhão da Escola Secundária de Albufeira (“Secundária”) .....	5
To: Pavilhão Desportivo da Guia (“Guia”) .....	6
To: Pavilhão Desportivo de Olhos de Água (“Aqua”) .....	7
To: Pavilhão Municipal de Albufeira (“Municipal 1” and “Municipal 2”) .....	8
To: Pavilhão Municipal Francisco Neves (“Imortal”) .....	9
To: Social Party .....	10

**How to get from your hotel to the different events venues (recommended route):**

**Albufeira Open 2023 matches**

**FROM**

Hotel Janelas do Mar

Rua Correeira – Lote 215, 8200-112 Albufeira

**To: Opening Ceremony**

Praça da Praia dos Pescadores, 8200-001 Albufeira

**Bus route 4 or 9**

1-From the Hotel Janelas do Mar walk 50m to EB23 Dr. Francisco Cabrita bus stop\* – map 1

2-Catch bus route 4 or 9 to Câmara Municipal bus stop (+-12 minutes)

3-From bus stop walk +-550m to Praça da Praia dos Pescadores – map 2

\*take note the correct side of the road of the bus stop! Do not go in the wrong direction!



**Map 1 – walk from Hotel Janelas do Mar to EB23 Dr. Francisco Cabrita bus stop**



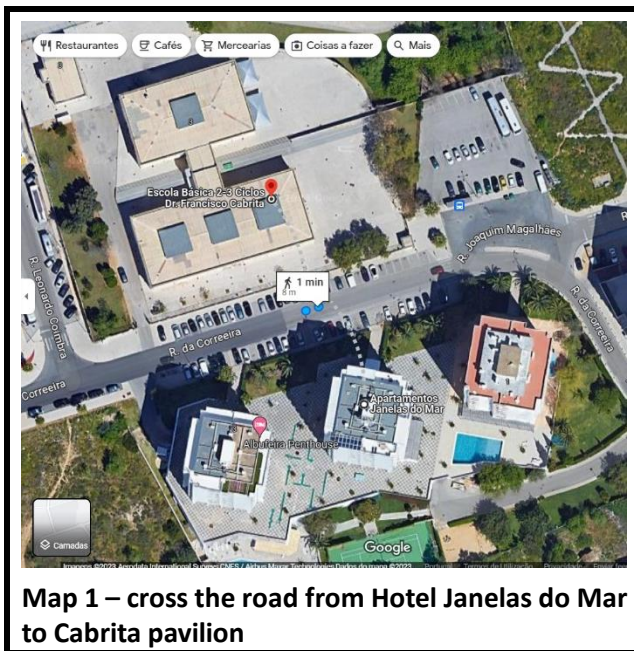
**Map 2 – walk from Câmara Municipal bus stop to Praça da Praia dos Pescadores**

To: Pavilhão da Escola Básica 2-3 ciclos Dr. Francisco Cabrita (“Cabrita”)

Rua da Correieira 3, 8200-317 Albufeira

### Walking

From the Hotel Janelas do Mar cross the the road to Cabrita pavilion – map 1



To: Pavilhão da Escola Básica Prof.<sup>ª</sup> Diamantina Negrão (“Negrão”)

Rua Prof.<sup>ª</sup> Diamantina Barreto Negrão 56, 8200-291 Albufeira

Bus route 6

1-From the Hotel Janelas do Mar walk 50m to EB23 Dr. Francisco Cabrita bus stop\* – map 1

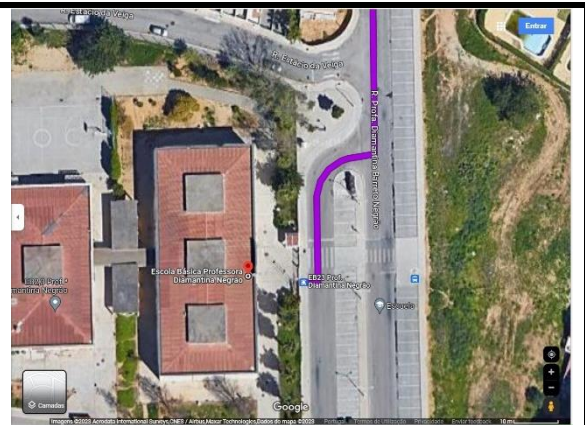
2-Catch bus route 6 to EB23 Prof.<sup>ª</sup> Diamantina Negrão bus stop (+5 minutes)

3-The Negrão pavilion is in front of the bus stop – map 2

\*take note the correct side of the road of the bus stop! Do not go in the wrong direction!



**Map 1 – walk from Hotel Janelas do Mar to EB23 Dr. Francisco Cabrita bus stop**



**Map 2 – EB23 Prof.<sup>ª</sup> Diamantina Negrão bus stop in front of Negrão pavilion**

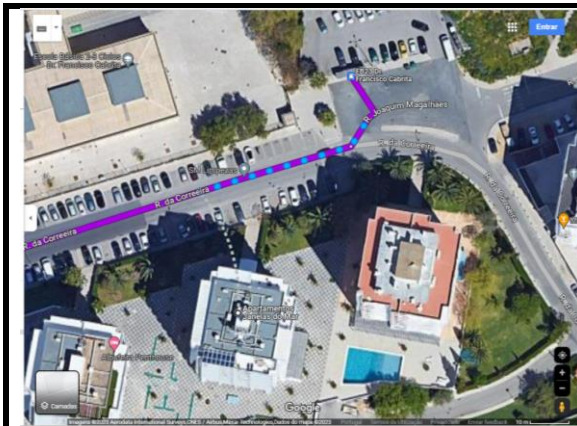
To: Pavilhão da Escola Básica Secundária de Albufeira (“Básica”)

Vale Pedras, 8200-047 Albufeira

Bus routes 6 and 1 or 4

- 1-From the Hotel Janelas do Mar walk 50m to EB23 Dr. Francisco Cabrita bus stop\* – map 1
- 2-Catch bus route 6 to Terminal Rodoviária bus stop (+-11 minutes)
- 3-At Terminal Rodoviária bus stop catch bus route 1 or 4 to EB Sec. Albufeira bus stop (+-6 minutes)
- 4-The Básica pavilion is across the road from the bus stop – map 2

\*take note the correct side of the road of the bus stop! Do not go in the wrong direction!



**Map 1 – walk from Hotel Janelas do Mar to EB23 Dr. Francisco Cabrita bus stop**



**Map 2 – cross the road from EB Sec. Albufeira bus stop to Básica pavilion**

To: Pavilhão da Escola Secundária de Albufeira (“Secundária”)

Rua das Escolas, 8200-126 Albufeira

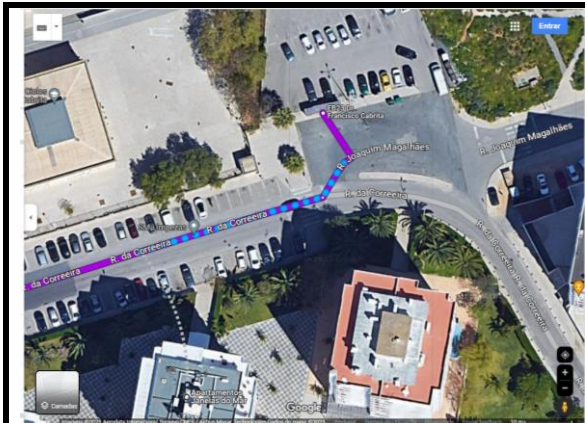
Bus route 6

1-From the Hotel Janelas do Mar walk 50m to EB23 Dr. Francisco Cabrita bus stop\* – map 1

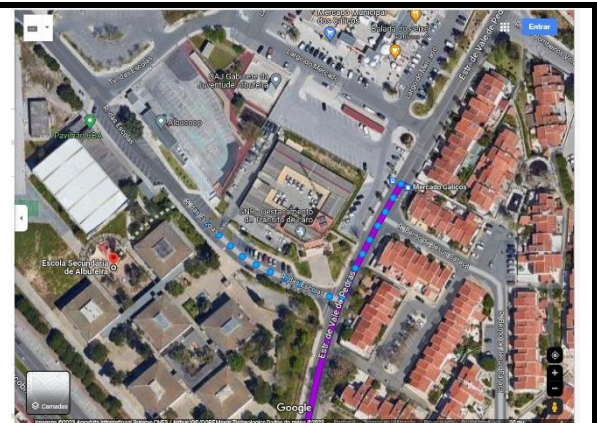
2-Catch bus route 6 to Mercado Caliços (+-6 minutes)

3-From Mercado Caliços walk 170m until Secundária pavilion – map 2

\*take note the correct side of the road of the bus stop! Do not go in the wrong direction!



**Map 1 – walk from Hotel Janelas do Mar to EB23 Dr. Francisco Cabrita bus stop**



**Map 2 – walk from Mercado Caliços bus stop to Secundária pavilion**

To: Pavilhão Desportivo da Guia (“Guia”)

Rua José Cabrita Santos, 8200 Guia

Bus routes 6 and 7

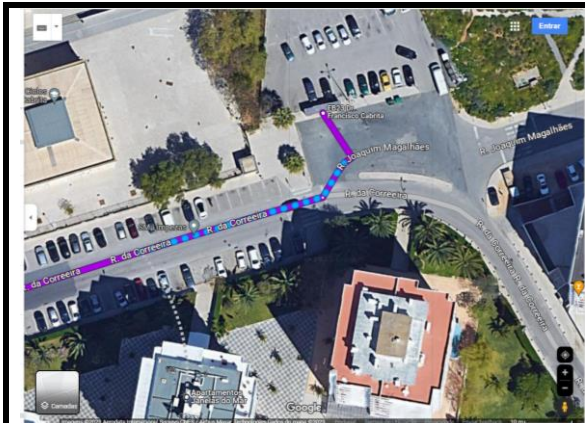
1-From the Hotel Janelas do Mar walk 50m to EB23 Dr. Francisco Cabrita bus stop\* – map 1

2-Catch bus route 6 to Terminal Rodoviário bus stop (+8 minutes)

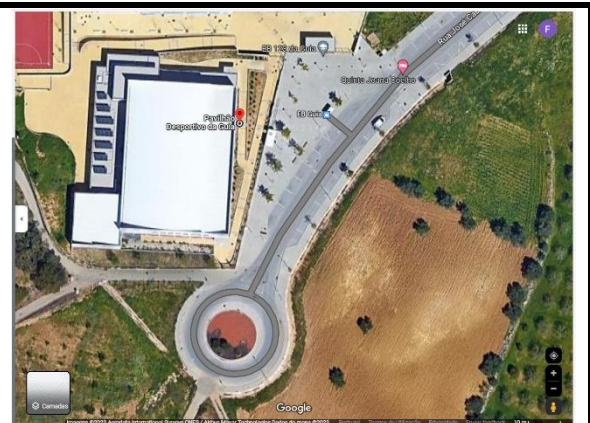
3-From Terminal Rodoviário catch bus route 7 to EB Guia bus stop (+20 minutes)

4-The Guia pavilion is in front of the bus stop – map 2

\*take note the correct side of the road of the bus stop! Do not go in the wrong direction!



**Map 1 – walk from Hotel Janelas do Mar to EB23 Dr. Francisco Cabrita bus stop**



**Map 2 – EB Guia bus stop in front of Guia pavilion**

To: Pavilhão Desportivo de Olhos de Água (“Aqua”)

Urbanização Pinhal do Concelho 54, 8200 Albufeira

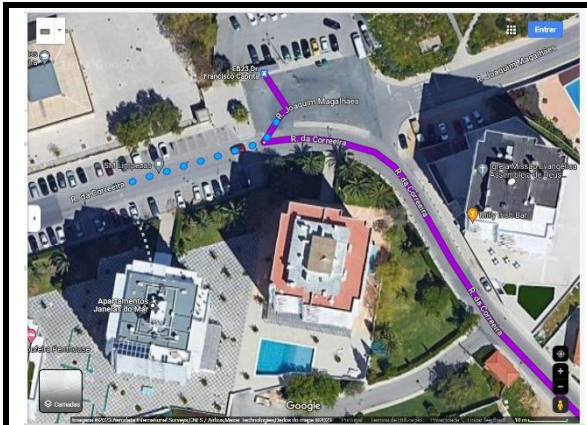
**Bus route 6**

1-From the Hotel Janelas do Mar walk 50m to EB23 Dr. Francisco Cabrita bus stop\* – map 1

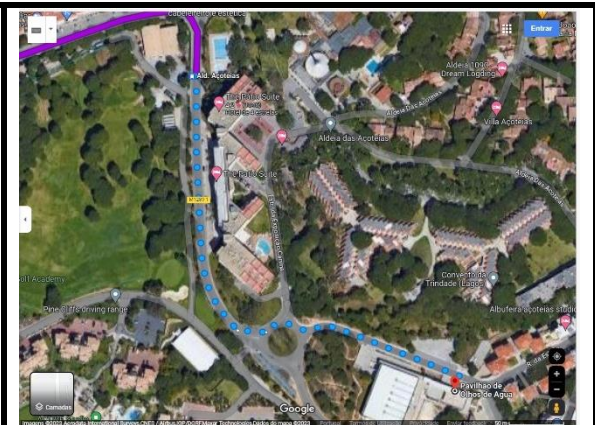
2-Catch bus route 6 to Ald. Açoiteias bus stop (+-22 minutes)

3-Walk from bus stop to Aqua pavilion (+- 400m) – map 2

\*take note the correct side of the road of the bus stop! Do not go in the wrong direction!



**Map 1 – walk from Hotel Janelas do Mar to EB23 Dr. Francisco Cabrita bus stop**



**Map 2 – walk from Ald. Açoiteias bus stop to Aqua pavilion**



To: Pavilhão Municipal de Albufeira (“Municipal 1” and “Municipal 2”)

Av.ª das Ilhas B, 8200-047 Albufeira

### Walking

1-From the Hotel Janelas do Mar walk 170m to Municipal 1 and 2 pavilion – map 1



To: Pavilhão Municipal Francisco Neves (“Imortal”)

Av.ª do Ténis, 8200-011 Albufeira

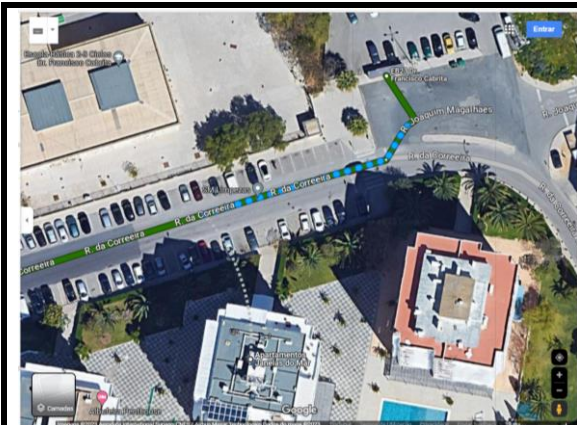
Bus route 2

1-From the Hotel Janelas do Mar walk 50m to EB23 Dr. Francisco Cabrita bus stop\* – map 1

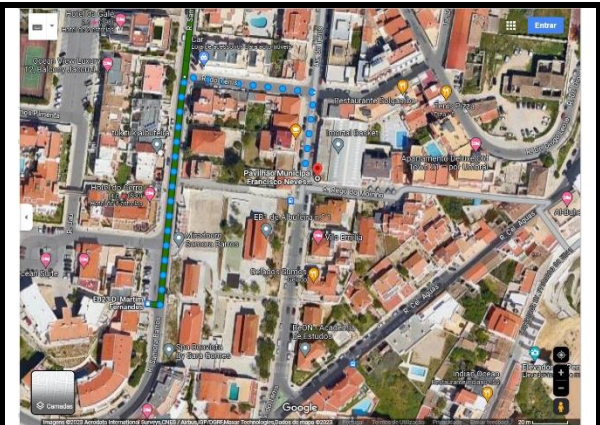
2-Catch bus route 2 to EB23 D. Martim Fernandes bus stop (+-25 minutes)

3-From the bus stop walk 250m to the Imortal pavilion – map 2

\*take note the correct side of the road of the bus stop! Do not go in the wrong direction!



**Map 1 – walk from Hotel Janelas do Mar to EB23 Dr. Francisco Cabrita bus stop**



**Map 2 – walk from EB23 D. Martim Fernandes bus stop to Imortal pavilion**

To: Social Party

Hotel Paraíso Albufeira, Hotel Paraíso, R. do Município, 8200-161 Albufeira

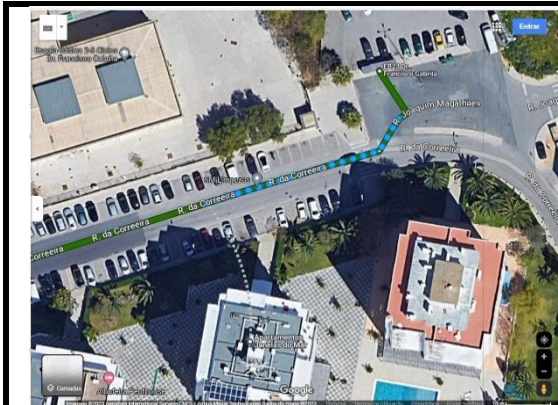
Bus route 2

1-From the Hotel Janelas do Mar walk 50m to EB23 Dr. Francisco Cabrita bus stop\* – map 1

2-Catch bus route 2 to Rotunda dos Relógios bus stop (+-4 minutes)

3-From the bus stop walk 350m to Hotel Paraíso – map 2

\*take note the correct side of the road of the bus stop! Do not go in the wrong direction!



**Map 1 – walk from Hotel Janelas do Mar to EB23 Dr. Francisco Cabrita bus stop**



**Map 2 – walk from Rotunda dos Relógios do Hotel Paraíso**