

Public transport information for participating teams in ESBA Albufeira Open 2023

From Aqua Pedra dos Bicos

To: Opening Ceremony.....	1
To: Pavilhão da Escola Básica 2-3 ciclos Dr. Francisco Cabrita (“Cabrita”).....	2
To: Pavilhão da Escola Básica Prof.ª Diamantina Negrão (“Negrão”).....	3
To: Pavilhão da Escola Básica Secundária de Albufeira (“Básica”).....	4
To: Pavilhão da Escola Secundária de Albufeira (“Secundária”).....	5
To: Pavilhão Desportivo da Guia (“Guia”).....	6
To: Pavilhão Desportivo de Olhos de Água (“Aqua”).....	7
To: Pavilhão Municipal de Albufeira (“Municipal 1” e “Municipal 2”).....	8
To: Pavilhão Municipal Francisco Neves (“Imortal”).....	9
To: Social Party	10

How to get from your hotel to the different events venues (recommended route):

Albufeira Open 2023 matches

FROM

Aqua Pedra dos Bicos

Urbanização, Aldeamento Quinta Pedra dos Bicos, Lote 24, 8200-381 Albufeira

To: Opening Ceremony

Praça da Praia dos Pescadores, 8200-001 Albufeira

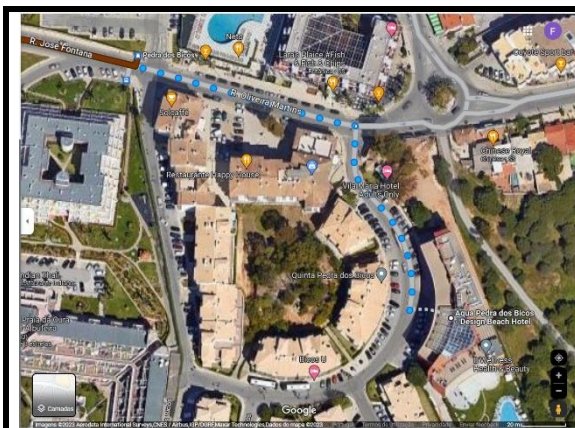
Bus route 4

1-From the Aqua Pedra dos Bicos walk 200m until Pedra dos Bicos bus stop* – map 1

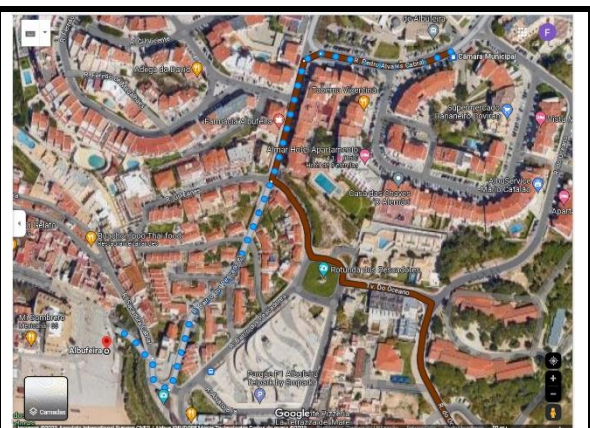
2-Catch bus route 4 to Câmara Municipal bus stop (+-9 minutes)

3-From bus stop walk +-550m to Praça da Praia dos Pescadores – map 2

*take note the correct side of the road of the bus stop! Do not go in the wrong direction!



Map 1 – walk from Aqua dos Bicos to Pedra dos Bicos bus stop



Map 2 – walk from Câmara Municipal bus stop to Praça da Praia dos Pescadores

To: Pavilhão da Escola Básica 2-3 ciclos Dr. Francisco Cabrita (“Cabrita”)

Rua da Correieira 3, 8200-317 Albufeira

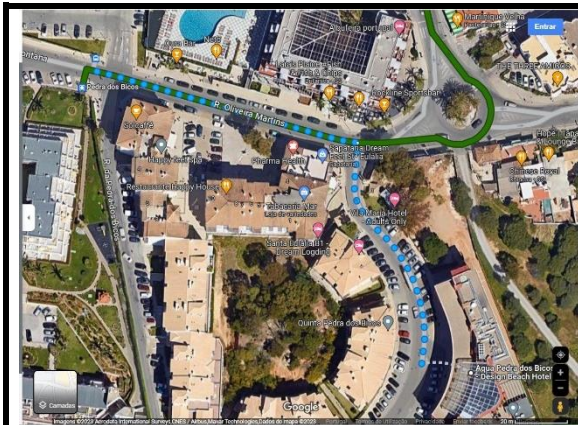
Bus route 2

1-From the Aqua Pedra dos Bicos walk 200m until bus stop Pedra dos Bicos* – map 1

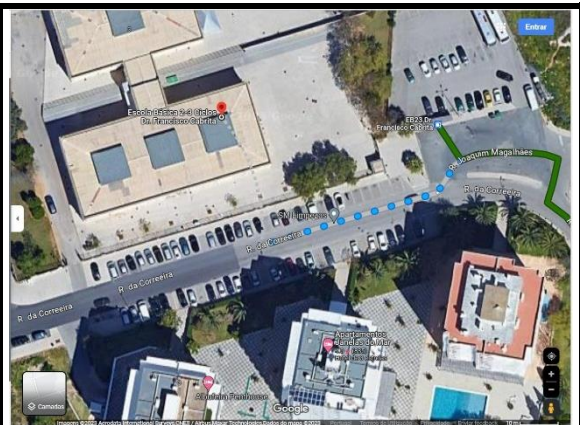
2-Catch bus route 2 to EB23 Dr. Francisco Cabrita bus stop (+-10 minutes)

3-The Cabrita pavilion is next to the EB 23 Dr. Francisco Cabrita bus stop.

*take note the correct side of the road of the bus stop! Do not go in the wrong direction!



Map 1 – walk from Aqua dos Bicos to Pedra dos Bicos bus stop



Map 2 – walk from EB23 Dr. Francisco Cabrita bus stop to Cabrita pavilion

To: Pavilhão da Escola Básica Prof.^a Diamantina Negrão (“Negrão”)

Rua Prof.^a Diamantina Barreto Negrão 56, 8200-291 Albufeira

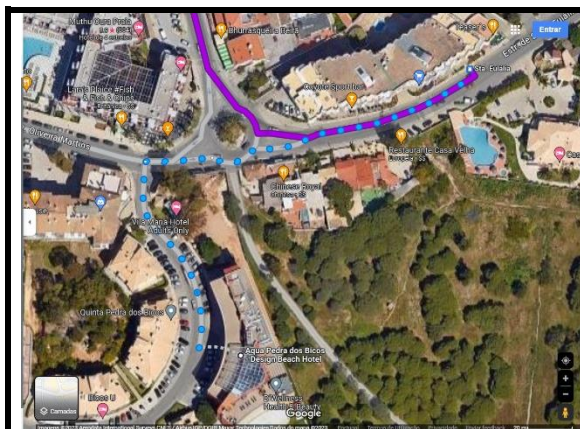
Bus route 6

1-From the Aqua Pedra dos Bicos walk 250m until St.^a Eulália bus stop* – map 1

2-Catch bus route 6 to EB23 Prof.^a Diamantina Negrão bus stop (+8 minutes)

3-The Negrão pavilion is across the road from the bus stop – map 2

*take note the correct side of the road of the bus stop! Do not go in the wrong direction!



Map 1 – walk from Aqua dos Bicos to St.^a Eulália bus stop



Map 2 – walk from EB23 Prof.^a Diamantina Negrão bus stop to Negrão pavilion

To: Pavilhão da Escola Básica Secundária de Albufeira (“Básica”)

Vale Pedras, 8200-047 Albufeira

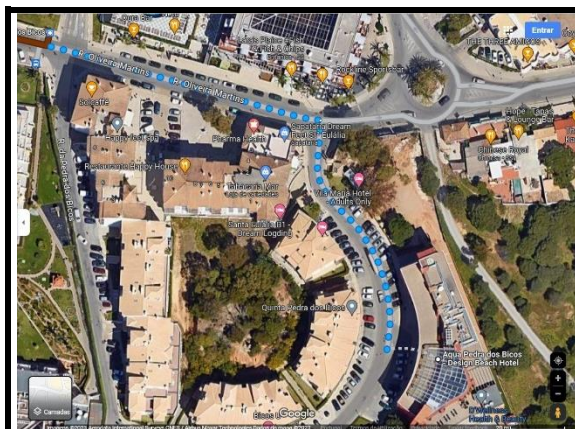
Bus route 4

1-From the Aqua Pedra dos Bicos walk 200m until bus stop Pedra dos Bicos* – map 1

2-Catch bus route 4 to EB Sec. Albufeira bus stop (+17 minutes)

3-The Básica pavilion is right in front of the bus stop – map 2

*take note the correct side of the road of the bus stop! Do not go in the wrong direction!



Map 1 – walk from Aqua dos Bicos to Pedra dos Bicos bus stop



Map 2 – walk from EB Sec. Albufeira bus stop to Básica pavilion

To: Pavilhão da Escola Secundária de Albufeira (“Secundária”)

Rua das Escolas, 8200-126 Albufeira

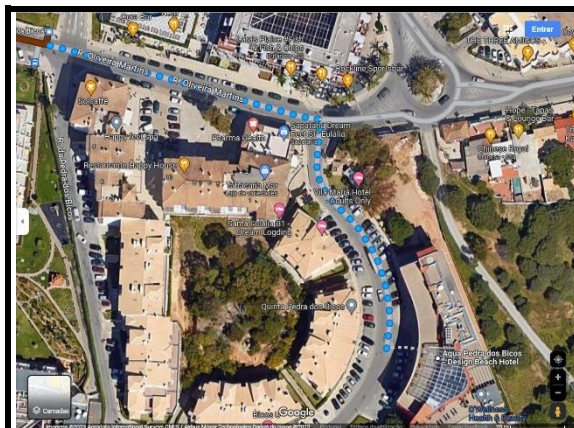
Bus route 4

1-From the Aqua Pedra dos Bicos walk 200m until bus stop Pedra dos Bicos* – map 1

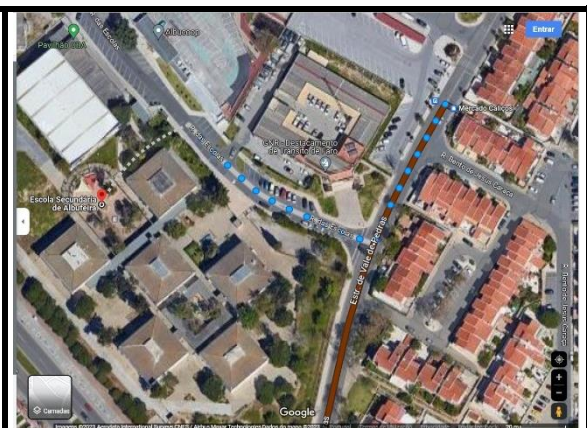
2-Catch bus route 4 to Mercado Caliços (+-11 minutes)

3-From Mercado Caliços walk 170m until Secundária pavilion – map 2

*take note the correct side of the road of the bus stop! Do not go in the wrong direction!



Map 1 – walk from Aqua dos Bicos to Pedra dos Bicos bus stop



Map 2 – walk from Mercado Caliços bus stop to Secundária pavilion

To: Pavilhão Desportivo da Guia (“Guia”)

Rua José Cabrita Santos, 8200 Guia

Bus routes 9 and 7

1-From the Aqua Pedra dos Bicos walk 250m until Sta. Eulalia bus stop* – map 1

2-Catch bus route 9 to Terminal Rodoviário (+-10 minutes)

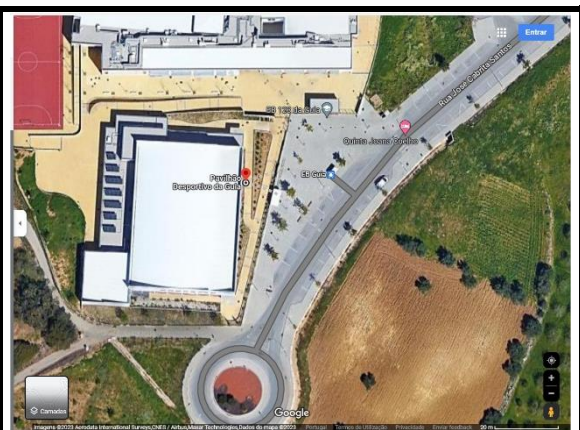
3-From Terminal Rodoviário catch bus route 7 to EB Guia (+-20 minutes)

4-The Guia pavilion is in front of the bus stop – map 2

*take note the correct side of the road of the bus stop! Do not go in the wrong direction!



Map 1 – walk from Aqua dos Bicos to Sta. Eulalia bus stop



Map 2 – EB Guia bus stop in front of Guia pavilion

To: Pavilhão Desportivo de Olhos de Água (“Aqua”)

Urbanização Pinhal do Concelho 54, 8200 Albufeira

Bus route 6

1-From the Aqua Pedra dos Bicos walk 250m until St.^a Eulália bus stop* – map 1

2-Catch bus route 6 to Ald. Açoiteias bus stop (+-20 minutes)

3-Walk from bus stop to Aqua pavilion (+- 400m) – map 2

*take note the correct side of the road of the bus stop! Do not go in the wrong direction!



To: Pavilhão Municipal de Albufeira (“Municipal 1” e “Municipal 2”)

Av.ª das Ilhas B, 8200-047 Albufeira

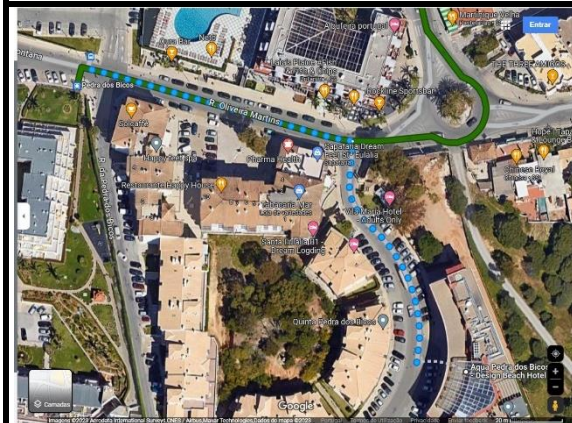
Bus route 2

1-From the Aqua Pedra dos Bicos walk 200m until bus stop Pedra dos Bicos* – map 1

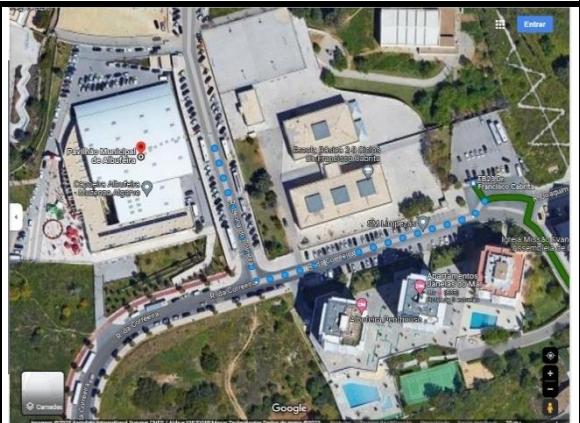
2-Catch bus route 2 to EB23 Dr. Francisco Cabrita bus stop (+-10 minutes)

3-Walk 220m from EB23 Dr. Francisco Cabrita bus stop to Municipal 1 and 2 pavilion – map 2

*take note the correct side of the road of the bus stop! Do not go in the wrong direction!



Map 1 – walk from Aqua dos Bicos to Pedra dos Bicos bus stop



Map 2 – walk from EB23 Dr. Francisco Cabrita bus stop to Municipal 1 and 2 pavilion

To: Pavilhão Municipal Francisco Neves (“Imortal”)

Av.ª do Ténis, 8200-011 Albufeira

Bus routes 6 and 8

1-From the Aqua Pedra dos Bicos walk 250m to St.ª Eulália bus stop * – map 1

2-Catch bus route 6 to Mercado Caliços bus stop (+-19 minutes)

3-At the bus stop, cross the road to other bus stop for bus route 8 – map 2

4-Catch bus route 8 to Avenida Ténis/EB 1 N.º1 bus stop (+- 5 minutes)

4-The Imortal pavilion is across the road from the bus stop – map 3

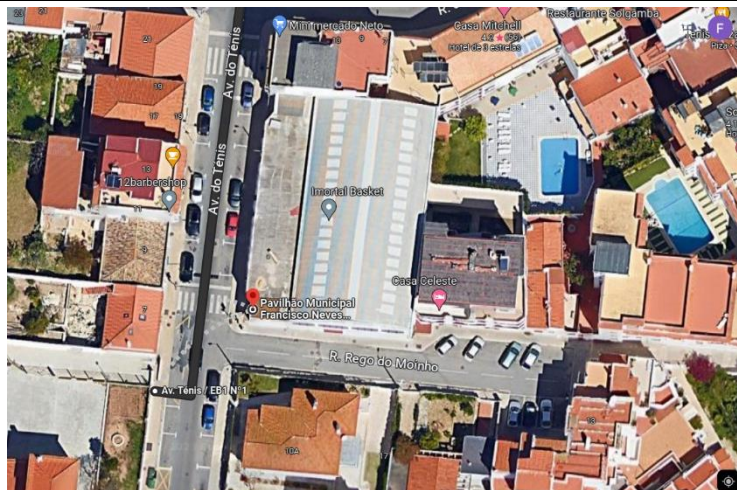
*take note the correct side of the road of the bus stop! Do not go in the wrong direction!



Map 1 – walk from Aqua dos Bicos to St.ª Eulália bus stop



Map 2 – At bus stop Mercado Caliços cross the road to other bus stop



Mapa 3 – Avenida Ténis/EB 1 N.º1 bus stop across the road from Imortal pavilion

To: Social Party

Hotel Paraíso Albufeira, Hotel Paraíso, R. do Município, 8200-161 Albufeira

Bus route 6

1-From the Aqua Pedra dos Bicos walk 250m to St.^ª Eulália bus stop* – map 1

2-Catch bus route 6 to Rotunda Relógios bus stop (+-17 minutes)

3-From the bus stop walk 350m until the Hotel Paraíso – map 2

*take note the correct side of the road of the bus stop! Do not go in the wrong direction!



Map 1 – walk from Aqua dos Bicos to St.^ª Eulália bus stop



Map 2 – walk from Rotunda Relógios bus stop to Hotel Paraíso